



PRODUCING QUALITY.

Product Range

Sweepers

Augers

Cone splitters

Crawler undercarriage

Snow blades

Salt spreaders

Walk-behind sweepers

Weed control

Drill rigs



www.adler-arbeitsmaschinen.de

ADLER quality



All ADLER products meet maximum quality criteria as it is our aim that our products set the standards in excellence.



Material

We only use the best materials for our products: thicker steel plates, bigger sweeper brushes, better tyres: Problem-free functions and sturdy design are more important to us than scrimping on material.



Manufacturing

We at ADLER weld, bolt and join our products with high precision to ensure maximum durability. We protect key components with top-quality primer & powder coating in all the important places. A perfect finish that lasts for years!



Ideas

The quality of ideas that goes into our products is also essential. We research which products our clients really need and develop them. In doing so, we use a modular approach, so that you can combine our products flexibly and adapt them to your individual requirements.



Technology maturity

From the outset, we develop our products to withstand conditions which go above and beyond standard situations. This means that our machines perform well even under the toughest conditions. We test our products thoroughly and even if they work perfectly, we continue to optimise and enhance them.



Service

It goes without saying that we offer perfect service quality. When you experience our service, you'll be convinced.



Thomas Schmiemann
Managing Director

+49 2573 97999-10
t.schmiemann@adler-arbeitsmaschinen.de



Rainer Hackenfort
Managing Director

+49 2573 97999-20
r.hackenfort@adler-arbeitsmaschinen.de



Stefan Ostendorf
Sales

+49 2573 97999-22
s.ostendorf@adler-arbeitsmaschinen.de



Hendrik Fisch
Sales

+49 2573 97999-23
h.fisch@adler-arbeitsmaschinen.de



Jeroen Withag
Sales Representative Benelux

+31 6247 64 353
j.withag@adler-arbeitsmaschinen.nl



Manuel Schober
Sales & Spare Parts

+49 2573 97999-46
m.schober@adler-arbeitsmaschinen.de

The products

| | |
|--|----|
| Sweeper K 450 | 4 |
| Sweeper K 560 | 6 |
| Sweeper K 600 | 8 |
| Sweeper K 750 | 10 |
| Sweeper K 950 | 12 |
| Bucket Sweeper KS 600 / 750 | 14 |
| Scraper Attachment KV | 16 |
| Auger E-series | 18 |
| Cone Splitter SP-series | 20 |
| Crawler Undercarriage | 22 |
| Snow Blade S-series | 24 |
| Snow Blade V-series | 26 |
| Salt Spread ST-E | 28 |
| SmartBox | 30 |
| Walk-Behind Sweeper HU 6.5 / HK 6.5 / HK 5.5 | 32 |
| Attachment Weed Brush HW 5.5 3D | 34 |
| Attachment Weed Brush W-series | 36 |
| Mode of operation der ADLER-Heater | 38 |
| ADLER-Heater Flexi 350 / 500 | 40 |
| ADLER-Heater 500 / 750 E | 42 |
| ADLER-Heater 1000 Light | 44 |
| ADLER-Heater 1000 / 1400 | 46 |
| Mounting versions | 48 |
| Drill Rigs B-series | 50 |



Achim Weinkauff
Spare Parts Sales

+49 2573 97999-19
a.weinkauff@adler-arbeitsmaschinen.de

Small, but nice
and clean ...

Sweeper K 450

- Mechanically / on option hydraulically driven sweeper
- Easy brush adjustment
- Low dead weight – stable design
- High corrosion protection due to primer and powder coating

DEVELOPED &
PRODUCED IN
GERMANY



KTL
& powder

Profile ADLER-Sweeper K 450

Small machine with a big effect ...

Attack dirt, light snow and leaves with this!

The ADLER K 450 is our smallest sweeper, which will impress you with its economic efficiency! Here we focus on low working weight under consideration of the stable design. Our working widths enable sweeping even in the smallest corners. Maintaining your pavements is a real cinch with this machine, which is even fun for the "big ones". The ideal machine for mounting on municipal tractors and small carrier vehicles.

Accessories:

- Hydraulic side swivel for flexible free-sweeping use
- PTO-shaft
- Large-volume hopper including wear-resistant sweeping edge
- Mechanical emptying, hydraulic on request
- 120 l water spray system to reduce dust formation during the sweeping process during sweeping (water tank mounted at the rear)
- Large rotary side brush for sweeping close to the edge, ideal for sweeping gutters (hydraulically driven)
- Support wheel (strongly recommended for yard loaders)
- LED 12 V side marker lights
- Special colour according to RAL colour shade (standard RAL 2002)

| ADLER-sweeper K 450 | | 120 | 135 | 150 |
|---|-------------------|--------------------|---------|---------|
| Working width, straight / angled | cm | 120/113 | 135/128 | 150/143 |
| Total width | cm | 136 | 151 | 166 |
| Brush diameter | mm | 450 | 450 | 450 |
| Rotation speed | 1/min | 540 – 2.200 | | |
| required hydraulic pressure and volume | | 160 bar / 25 l/min | | |
| Weight simple sweeping incl. attachment | kg | 170 | 175 | 185 |
| Fill capacity hopper | Litres | 54 | 61 | 68 |
| Area performance | m ² /h | 9.600 | 10.800 | 12.000 |



K 450 with mechanical hopper emptying



Rotary side brush in use



K 450 for simple sweeping



Brush adjustment via push-fit system



Hitch system hitch triangle Kat. Municipal



K 450 on multifunction loader

Take it to the street ...

Sweeper K 560

- Mechanically/optionally hydraulically operated sweeper
- Easy sweeper brush adjustment
- Low net weight
- Extremely robust design



Profile

ADLER-Sweeper K 560

The perfect cleaning solution for your municipality ...

Clear streets and public places easily from dirt, fallen leaves or snow. The ADLER K 560 is the economical choice for municipal use, horticulture or landscape gardening and service providers in the property management sector. Thanks to its lightweight construction, this mechanically driven sweeper (which is also optionally available with hydraulic drive) is perfect for mounting on municipal tractors and small carrier vehicles.

Accessories:

- Hydraulic swivel mechanism for flexible simple sweeping
- Large capacity hopper with wear-resistant sweeping lip, 3rd support wheel and hydraulic emptying system as a standard feature with simple sweeping mode
- Water spray system (120 l) for dust control during sweeping (water tank mounted on rear of vehicle)
- Large rotary side brushes for sweeping edges, perfect for sweeping gutters (hydraulically driven)
- Reinforced heavy-duty wheels Ø 200 mm x 50 mm
- Splash guard mechanically height-adjustable
- Side marker lights, LED, 12/24 V
- Customised colour as per RAL colour chart (standard: RAL 2002)

| ADLER-Sweeper K 560 | | 135 | 150 | 180 |
|----------------------------------|--------|-------------|---------|---------|
| Working width, straight / angled | cm | 135/128 | 150/143 | 180/171 |
| Total width | cm | 151 | 166 | 196 |
| Brush diameter | mm | 560 | 560 | 560 |
| Rotation speed | 1/min | 540 – 2.200 | | |
| Weight incl attachment / hopper | kg | 190/243 | 205/261 | 235/296 |
| Fill capacity hopper | Litres | 128 | 142 | 173 |
| Area performance | m²/h | 10.800 | 12.000 | 14.400 |



Rotary side brush in use



K 560 with adjustable splash guard



Large angle of breakage in the machine frame – ideal for clearing snow



K 560 with Salt Spreader ST-E in winter maintenance



Standard equipment includes simple sweeping mode for machines with hopper

A clean sweep ...

Sweeper K 600

- ▶ 600 mm brush diameter
- ▶ Simple sweeping mode
- ▶ Universal mount system
- ▶ Comfortable brush readjustment
- ▶ Hydraulic emptying system fitted as standard feature
- ▶ 2 large wheels Ø 250 mm
- ▶ With overrun protection as standard feature

Universal attachment system

DEVELOPED &
PRODUCED IN
GERMANY

KT
& powder

Profile

ADLER-Sweeper K 600

A clever solution that doesn't cost the earth ...

Thanks to our modular system, you can also re-fit your ADLER K 600 with items from a large range of accessories at any time.

Accessories:

- ▶ Large hopper incl. wear-resistant sweeping lip, hydraulic emptying (standard) incl. simple sweeping mode and 3rd support wheel
- ▶ Rotary side brushes, 600 mm, for sweeping edges – perfect for sweeping gutters
- ▶ Water spray system (120/240 l) for dust control
- ▶ Protected internal motor
- ▶ Reinforced heavy-duty wheels Ø 250 mm x 80 mm
- ▶ Flow control valve 3/4" for an hydraulic oil flow from 75 l/min. to 120 l/min.
- ▶ Flow control valve 1" for an hydraulic oil flow of > 120 litres
- ▶ Hydraulic swivel mechanism for flexible simple sweeping
- ▶ Attachment mount suitable for front plate, DIN 76060, Size 3 or 5, including hydraulic cylinder and levelling system for optimum adjustment to ground surface
- ▶ Scraper Attachment KV-series
- ▶ Side marker lights, LED, 12/24 V
- ▶ Customised colour as per RAL colour chart (standard: RAL 2002)

| ADLER-Sweeper K 600 | | 135 | 150 | 180 | 210 | 240 | 270 |
|--------------------------------------|--------|----------------------|---------|---------|---------|----------------------|---------|
| Working width, straight / angled | cm | 135/127 | 150/141 | 180/169 | 210/197 | 240/226 | 270/254 |
| Total width | cm | 166 | 181 | 210 | 240 | 269 | 299 |
| Brush diameter | mm | 600 | 600 | 600 | 600 | 600 | 600 |
| Required hydraulic pressure & volume | | 160 bar / > 25 l/min | | | | 160 bar / > 40 l/min | |
| Weight simple sweeping / hopper | kg | 290/378 | 320/413 | 345/448 | 370/472 | 395/517 | 420/550 |
| Hopper capacity | Litres | 191 | 212 | 255 | 297 | 340 | 382 |
| Area performance | m²/h | 10.800 | 12.000 | 14.400 | 16.800 | 19.200 | 21.600 |



Optional rotary side brush and Water spray system



Reinforced, heavy-duty swivel castors

Suitable for attachment on front and rear of tractor



Brushes are continuously adjustable



Simple sweeping mode, hydraulic hopper emptying system and 3rd support wheel on hopper



K 600 Scraper Attachment without hopper



Yard loader attachment with 3D levelling system



Wheel loader attachment incl. levelling system via roller guide

... it'll sweep you
off your feet!

Sweeper K 750

- ▶ 750 mm Brush diameter
- ▶ 2 Heavy-duty wheels Ø 400 mm
- ▶ With overrun protection as standard feature
- ▶ Internal hydraulic motor
- ▶ Suspended sweeper broom
- ▶ Universal attachment system
- ▶ In-house production

Front and rear attachment possible

DEVELOPED &
PRODUCED IN
GERMANY

KTL
& powder

Profile ADLER-Sweeper K 750

A clean sweep with ADLER

Further highlights include the high-quality heavy-duty swivel castor, which enable the ADLER K 750 to ride over potholes, railway tracks and rough terrain without any difficulty. As optional extras, you can fit your machine with a large-capacity hopper, use side brushes to sweep curbs and gutters, or easily reduce dust levels during sweeping thanks to our Water spray system..

Accessories:

- ▶ Large hopper incl. simple sweeping mode, incl. wear-resistant sweeping lip and heavy-duty wheels ø 400 mm x 100 mm
- ▶ Rotary side brushes for sweeping close to the edge – perfect for sweeping gutters
- ▶ Water spray system 240 l for dust control
- ▶ Flow control valve 1" for hydraulic fluid volumes > 90 l/min
- ▶ Hydraulic angling for flexible simple sweeping
- ▶ Attachment front plate, DIN 76060
Size 3 or 5, including hydraulic cylinder and levelling system for optimum adjustment to ground surface
- ▶ Scraper Attachment KV-series
- ▶ Side marker lights, LED, 12/24 V
- ▶ Customised colour as per RAL colour chart (standard: RAL 2002)

| ADLER-Sweeper K 750 | | 210 | 240 | 270 | 300 | 330 |
|--|--------|----------------------|---------|----------------------|---------|-----------|
| Working width, straight / angled | cm | 210/198 | 240/228 | 270/257 | 300/285 | 330/313 |
| Total width | cm | 233 | 262 | 292 | 321 | 351 |
| Brush diameter | mm | 750 | 750 | 750 | 750 | 750 |
| Required hydraulic pressure & volume | | 160 bar / > 35 l/min | | 160 bar / > 40 l/min | | |
| Weight, including mount / hopperr | kg | 499/690 | 596/800 | 674/890 | 748/995 | 875/1.135 |
| Hopper capacity | Litres | 390 | 450 | 500 | 555 | 610 |
| Area performance | m²/h | 16.800 | 19.200 | 21.600 | 24.000 | 26.400 |
| For carrier vehicles with operating weight | t | 3+ | 4+ | 5+ | 6+ | 6+ |



Optional rotary side brush and 240-l water tank



K 750 suitable for front and rear attachment



Simple sweeping mode and 750 mm brush diameter as standard features



Three large wheels 400 mm x 100 mm



K 750 with hopper and Scraper Attachment



Hydraulic hopper emptying system

... it's size-dependent!

Sweeper K 950

- ▶ Huge surface performance
- ▶ Heavy-duty hydraulic package:
incl. oil flow control valve 1 1/4" and back-pressure valve against overtravel, up to a hydraulic flow rate of 400 l/min
- ▶ Large support wheels
Ø 460 x 125 mm (solid rubber)
- ▶ Short attachment due to intelligent mounting system with 3D compensation and integrated hydraulic swivel
- ▶ Suspended brush: Top sweeping results, long brush service life

Incl. SmartBox
as standard
equipment



DEVELOPED &
PRODUCED IN
GERMANY

Profile

ADLER-Sweeper K 950

The ADLER for huge surface performance!

The K 950 from ADLER is one of Europe's largest sweepers. With a brush diameter of almost one metre, rotational speeds are generated which even under the most extreme conditions – as, for example, use in quarrying – ensure clean results for your operation. Thanks to its 46 cm large heavy-duty swivel castors, the ADLER K 950 also masters rough terrain problem-free. The highly comfortable control of all its hydraulic and electric functions from the cabin will inspire you. For example, you can use the series hydraulic swivel or simply only fold the side brush down and switch it on. A heavy-duty hydraulic package, incl. oil flow control valve 1 1/4" and back-pressure valve against overtravel will fully secure your machine up to an hydraulic flow rate of 400 l/min..

Accessories:

- ▶ High-volume dirt collection hopper with two integrated heavy-duty wheels (Ø 460 x 125 mm) including electrically switchable simple sweeping mode and wear-resistant sweeping lip
- ▶ Hydraulic foldable and connectible side brush, Ø 900 mm (can be used on the left- or right-hand side)
- ▶ 600-liter water spray system with two electrical pumps (12/24 volt)
- ▶ Splash guard specially developed for the wide working width (adjustable)
- ▶ 3rd support wheel – advantageous for independent sweeping
- ▶ Side marker lights, LED (12/24 volt) and/or warning flags
- ▶ Customised colour according to RAL colour chart (standard: RAL 2002)

| ADLER-Sweeper K 950 | | 300 | 330 | 360 | 390 |
|--|--------|---------------------|-------------|-------------|-------------|
| Working width, straight / angled | cm | 300/275 | 330/304 | 360/334 | 390/363 |
| Total width | cm | 327 | 357 | 386 | 416 |
| Brush diameter | mm | 950 | 950 | 950 | 950 |
| Required hydraulic pressure & volume | | 160 bar / >65 l/min | | | |
| Weight, including mount/hopper | kg | 2.010/2.660 | 2.055/2.725 | 2.100/2.790 | 2.150/2.860 |
| Hopper capacity | Litres | 1.100 | 1.210 | 1.320 | 1.425 |
| Area performance | m²/h | 24.000 | 26.400 | 28.800 | 31.000 |
| For carrier vehicles with operating weight | t | ab 12 | | ab 15 | |



If you go for a water-spray system, then take the right one: the side brush is always equipped with a spray nozzle.



All-in: hydraulic angling, 3D levelling, height indicators and the innovative ADLER mounting bracket.



The function "simple sweeping" can be activated by a remote control.



Four big, stable wheels (460 x 125 mm) guarantee a perfect bottom guidance.



Optional hydraulic side brush, can be switched on/off (ø 900 mm).



The particular "deep" hopper increases sweeping capacity. Of course, incl. hydraulic emptying (standard).



Keep things
spinning ...

Bucket Sweeper KS 600 / 750

- ▶ 600 or 750 mm brush
- ▶ Wear resistant cutting edges & welded armoured steel naps
- ▶ Lateral cutting edges (angular arrangement)
- ▶ Convenient broom adjustment
- ▶ Internal hydraulic motor, protected on the sides



Profile ADLER-Bucket Sweeper KS 600 / 750

The ultimate street sweeper.

The Bucket Sweeper KS 600 / 750 demonstrates its true strengths when used under tough road construct a powerful and deep sweeping of slotted cracks.

Easily interchangeable wear resistant cutting edges with welded armoured steel naps, fitted at an angle, are standard and are to ensure a long service life of the bucket sweeper. The typic high-quality cathodic dip-coating (KTL) and powder coating make this a neat piece of work.

Robust, durable and versatile, the KS 600 / 750 is the ideal all-rounder for daily use under extreme conditions.

Accessories:

- ▶ Steel guide rollers (Ø 125 mm) on the rear of the bucket
- ▶ Hydraulic folding
- ▶ Adjustable dust flap
- ▶ Rotary side brush
- ▶ Water spray system

| ADLER-Bucket Sweeper KS 600 / 750 | | 150 | 165 | 180 | 210 | 240 |
|--------------------------------------|----------------------|-------|--------|--------|--------|--------|
| Working width | cm | 150 | 165 | 180 | 210 | 240 |
| Total width | cm | 174 | 189 | 204 | 234 | 264 |
| Brush diameter | mm | 600 | 600 | 600 | 750 | 750 |
| Required hydraulic pressure & volume | 160 bar / > 30 l/min | | | | | |
| Weight, including bucket | kg | 419 | 460 | 502 | 618 | 706 |
| Bucket capacity | Litres | 388 | 426 | 465 | 590 | 674 |
| Area performance | m²/h | 9.000 | 10.100 | 10.900 | 12.600 | 14.400 |



Adjustable dust flap



Hydraulic folding system (optional)



Emptying system



Sweeping bucket optionally available with rotary side brush



KS 600 mounted on a wheel loader incl. water-spray system



Interchangeable wear-resistant cutter

A truly effective scraper

Scraper Attachment KV-series

- Frees persistent dirt
- Versatile use
- Wear resistant scraper bars
- Suspended scraper bars



Profile ADLER-Scraper Attachment KV-series

Show dirt what you've got.

Business before pleasure! Don't forget about scraping after the job has been done! Debris and spillage on roads due to harvesting and other work in the fields pose a serious safety hazard. As the person responsible, you are legally required to take corrective action in such cases. The ADLER-Scraper Attachments KV-series offer an optimum solution. The KV-series is ideal for use on bends, roads, lanes, paths and open spaces – any place where stubborn dirt from soils and clay earth makes it difficult to sweep.

With the KV-series, you'll always achieve a clean end result no matter whether you mount the Scraper Attachment in front of your tractor or wheel loader, combine it with one of our sweepers or you scrape at the front and sweep at the rear while driving your tractor.

Accessories:

- Hydraulic swivel for direct attachment
- Mounting options for direct attachment:
3-point hitch or universal attachment for wheel, telescopic and front loaders
- 3rd support wheel for optimum floor guidance

| ADLER-Scraper Attachment KV-series | 135 | 150 | 180 | 210 | 240 | 270 | 300 | 330 |
|--|-----|-----|-----|-----|-----|-----|-----|-----|
| Working width cm | 135 | 150 | 180 | 210 | 240 | 270 | 300 | 330 |
| Direct attachment for tractors, wheel loaders or other carrier vehicles | - | - | ✓ | ✓ | ✓ | ✓ | ✓ | ✓ |
| KV-series attached to K 600 Sweeper without hopper – only possible in simple sweeping mode | ✓ | ✓ | ✓ | ✓ | ✓ | ✓ | - | - |
| KV series mounted on Sweeper K 750 without hopper – only possible in simple operation | - | - | - | ✓ | ✓ | ✓ | ✓ | ✓ |
| KV-series attached to K 750 Sweeper, on option with hopper | - | - | - | ✓ | ✓ | ✓ | - | - |



Direct attachment to tractors or wheel loaders



KV-series Scraper Attachment with third support wheel



Sweeping machine K 750 (simple sweeping) and scraper



The suspended scraper bar elements optimally adapt to uneven road surfaces



With ADLER everything goes well: sweeping machine with hopper, scraper and side brush



Combination scraper/sweeping machine K 750 with hopper

Full of drive ...

Auger E-series

- ▶ Compact design
- ▶ Low total height
- ▶ Highly efficient
- ▶ Maintenance-free usage
- ▶ Sturdy design
- ▶ Versatile in use

DEVELOPED &
PRODUCED IN
GERMANY



Profile

ADLER-Auger E-series

Powerful performance. The Auger Range for every carrier vehicle.

The ADLER-Auger E-series is equipped with powerful orbital engines, which are protected by a sturdy enclosure. The EG 250 and EG 500 models also feature additional transmission. The machine is operated using a single-action or dual-action hydraulic control circuit.

The auger are mounted directly using the quick hitch mechanism or forklift forks on yard loaders or smaller wheel loaders.

In the case of mini-excavators, the quick hitch coupler or a bolt attachment are used to mount attachments.

The universal joint in the auger attachment ensures that drilling is always vertical no matter how the carrier vehicle is positioned on the ground.

The auger drills are equipped with exchangeable heads and blades suitable for light to medium soils. The augers are also easy to change using a bolt fixing mechanism.

You can also work with medium and heavy soils quickly and effectively using our heavy duty auger blades and heads.

Accessories:

- ▶ Attachment options:
Excavator attachment as quick coupler or universal attachment for wheel loader, telescopic loader and front loader
- ▶ Auger drill (standard / heavy duty)
- ▶ Pressure relief valve

| ADLER-Augers | E 50 | E 100 | E 165 | EG 250 | EG 500 |
|--------------------------------------|-----------------------|-----------------------|-------------------------|-----------------------------|-------------------------|
| Drive | Hydraulic | | | Hydraulic with transmission | |
| Auger diameter mm | to 200 | to 300 | to 500 | to 750 | to 1000 |
| Required hydraulic pressure & volume | 160 bar > 20 l/min | 200 bar > 20 l/min | 200 bar / > 30 l/min | 210 bar / > 50 l/min | 210 bar / > 75 l/min |
| Torque daNm | 50 | 100 | 165 | 250 | 500 |
| Pressure relief valve | on option | | | incl. | |
| Weight* kg | 90 | 101 | 115 | 191 | 203 |

* Weight without mounting system



EG 500 Geared Auger



Auger on mini-excavator



Auger with yard/wheel loader attachment

Universal joint and front bearings featured as standard



Auger drills and different qualities in standard and heavy-duty design



CTL
& powder

Powerful splitting ...

Cone Splitter SP-Serie

- Compact design
- Splitter cone made of tempered steel
- With double-start buttress thread
- Highly efficient
- Practical stacking function
- Versatile in use

DEVELOPED &
PRODUCED IN
GERMANY



KTL
& powder

Profile

ADLER-Cone Splitter SP-Serie

To the point: how you cut bulky timber into pieces.

You can split tree roots, chop firewood or produce fencing posts. You can even move stacks of timber and split wood easily in a single work process. ADLER-Cone Splitters SP-series allow you to complete such heavy work effortlessly without straining your back. The ADLER- Cone Splitter series features high-performance orbital motors and an additional front bearing with grease lubrication. The machine is operated using a single-action or dual-action hydraulic control circuit.

The Cone Splitters are mounted directly on excavators using the quick hitch mechanism or attached with bolts.

The Cone Splitter is made of tempered steel and features a double-start buttress thread which penetrates each piece of wood autonomously. This produces a powerful splitting effect which provides excellent results, even on carrier vehicles with low hydraulic power.

Accessories:

- Flange for auger drill and weed brush
- Auger drill (standard / heavy duty)
- Weed brush

| ADLER-Cone Splitter | SP 100 | SP 130 | SP 165 | SP 200 |
|---|--|--|--|--|
| Drive | Hydraulic | | | |
| Required hydraulic pressure & volume | 180 bar / > 30 l/min | 180 bar / > 50 l/min | 180 bar / > 60 l/min | 180 bar / > 80 l/min |
| Torque daNm | 100 | 130 | 165 | 200 |
| Pressure relief valve | Featured as standard | | | |
| Splitting attachment Ø/length mm | 135 / 285 | 135 / 285 | 160 / 340 | 160 / 340 |
| Splitting capacity (depending on wood type) | 1 m to about 3 m Length Ø to 0,6 m | 1 m to about 4 m Length Ø to 0,8 m | 1 m to about 4 m Length Ø to 1,0 m | 1 m to about 5 m Length Ø to 1,0 m |
| Weight* kg | 121 | 126 | 137 | 142 |

* Weight without mounting system



Highly cost-effective



Splitting and stacking in a single work process



Equally suitable for weed control



Effective work process even for smaller carrier vehicles



Penetrates each piece of wood autonomously



Go to diferrent terrain now!

Crawler Undercarriage F-series

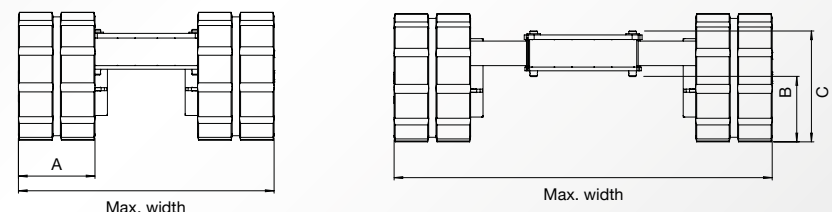
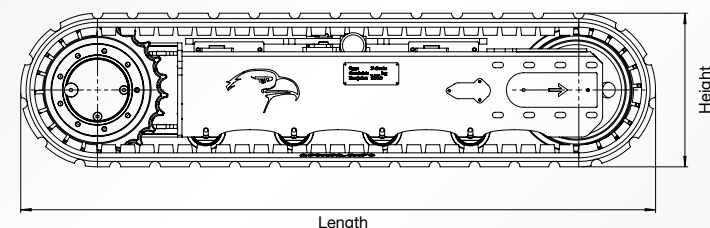
- ▶ Perfectly suitable for industrial, agricultural and construction machinery
- ▶ Choose between a rigid or an extendable undercarriage incl. hydraulic telescoping
- ▶ Very stable design
- ▶ Two speed levels
- ▶ Standard equipment includes four lashing points
- ▶ On option, customer-specific adaptations possible



Profile ADLER-Crawler Undercarriage F-series

We don't like gridlocked situations!

The stable and long-life ADLER-Crawler Undercarriages are the ideal solution and advantage where wheels can squeeze or damage the ground surface because of punctual pressure. They allow high stability and manoeuvrability in multiple application areas. No matter what – Drill Rig, lifting platform, crane or harvester – the extendable ADLER- Crawler Undercarriages make your machine a flexible off-roader.



| ADLER-Crawler Undercarriage F-series | F 17 | F 25 | F 30 | F 35 | F 45 | F 75 |
|--------------------------------------|-------|-------------|-------------|---------------|---------------|----------------|
| Load capacity incl. undercarriage kg | 1.700 | 2.500 | 3.000 | 3.500 | 4.500 | 7.500 |
| Load capacity excl. undercarriage kg | 1.380 | 2.110 | 2.550 | 2.815 | 3.660 | 5.850 |
| Weight kg | 320 | 390 | 450 | 685 | 840 | 1.650 |
| Length mm | 1.344 | 1.446 | 1.699 | 1.728 | 1.952 | 2.523 |
| Min. width mm | 725 | 775 | 780 | 835 | 1.000 | 1.300 |
| Max. width mm | 1.125 | 1.175 | 1.180 | 1.235 | 1.400 | 1.700 |
| Height mm | 336 | 336 | 336 | 418 | 452 | 560 |
| Chain width A mm | 180 | 230 | 250 | 250 | 300 | 400 |
| Pass-over height B mm | 182 | 182 | 168 | 232 | 235 | 243 |
| Height in extended position C mm | 286 | 289 | 285 | 349 | 358 | 478 |
| Speed km/h | 2,8 | 2,6 / 5,2 | 2,6 / 5,2 | 2,2 / 3,5 | 2,2 / 3,5 | 2,4 / 4,7 |
| Max. oil flow per motor l/min | 20 | 20 | 20 | 35 | 35 | 55 |
| Max. torque value per motor Nm | 1.443 | 1.607 / 798 | 1.607 / 798 | 4.820 / 3.015 | 4.820 / 3.015 | 10.465 / 5.420 |
| Max. pressure bar | 200 | 200 | 200 | 200 / 240 | 200 / 240 | 200 / 280 |



ADLER-Drill Rig on ADLER-Crawler Undercarriage



A stable steelwork assures long durability of the the extendable ADLER-Crawler Undercarriages



The centre piece of the undercarriage has many fixing points for customer-specific use.



Quality motors assure a good torque value and guarantee the excellent ADLER performance, as usual.



All undercarriages can be manufactured in a rigid version or with hydraulic telescoping.



Ready for snowy weather ... Snow Blade S-series

- ▶ Up to 115 cm high and 330 cm wide
- ▶ Material thickness 5 mm - 6 mm steel plate
- ▶ Anti-icing spring flaps
- ▶ Adjustable support wheels
- ▶ Edge protections
- ▶ Large network of suppliers
- ▶ In-house production

DEVELOPED &
PRODUCED IN
GERMANY



KTL
& powder

Profile ADLER-Snow Blade S-series

Next winter is certain to come!

And also the next ... and the one after next ...

With the ADLER-Snow Blade S-series, you'll be ideally prepared for clearing snow and ice for many years to come.

We've designed the spring flap system of the clearing lip in a manner that it cannot ice over. This guarantees excellent clearing results in even the toughest weather conditions and round-the-clock use. Moreover, the time-consuming task of de-icing the spring flaps while you're on the road also becomes unnecessary. If you choose our optional hydraulic angling system the driver can also easily angle the snow blade from the driver's seat during clearing.

Accessories:

- ▶ Hydraulic angling allows you to clear snow effectively without leaving the driver's seat
- ▶ Pressure relief valve for overload protection
- ▶ Extra heavy-duty wheels
- ▶ Alternative wear lips:
 - rubber and corundum lip
 - steel lip
- ▶ Side marker lights, LED, 12/24 V with reflective strips, left/right
- ▶ Holders for warning flags
- ▶ Warning flags, made of flexible and rounded material
- ▶ Customised colour as per RAL colour chart (standard: RAL 2002)

| ADLER-Snow Blade S-series | 135 | 150 | 180 | 210 | 240 | 270 | 300 | 330 |
|---|----------|----------|----------|----------|----------|----------|----------|----------|
| Working width (gerade / schräg to 30°) cm | 135/120 | 150/134 | 180/160 | 210/187 | 240/214 | 270/241 | 300/263 | 330/289 |
| Height mm | 650 | 650 | 800 | 800 | 800 | 800 | 1.150 | 1.150 |
| Wheels Ø/mm | 200 x 50 | 200 x 50 | 200 x 80 | 200 x 80 | 200 x 80 | 200 x 80 | 250 x 80 | 250 x 80 |
| Weight kg | 195 | 210 | 336 | 366 | 393 | 421 | 594 | 628 |



Anti-icing spring flaps incl. edge protection (standard), various clearing lips on option



S-series attached to a wheel loader



Working widths from 135 cm to 330 cm



Snow blade, material thickness 5-6 mm steel plate



Universal mount system with hydraulic pivot mechanism (with two hydraulic cylinders)



Height-adjustable support wheels (200 x 80 mm)

Cleared ...

Snow Blade V-series

- ▶ Up to 65 or 90 cm high and 135 to 330 cm wide
- ▶ Two swivel-mounted folding wings
- ▶ Hydraulic side swivel mechanism
- ▶ Anti-icing spring flaps
- ▶ Edge protections
- ▶ High-quality primer & powder coating
- ▶ Adjustable support wheels

DEVELOPED &
PRODUCED IN
GERMANY



CTL
& powder

Profile ADLER-Snow Blade V-series

The Snow ADLER for next winter!

We equip the V-series with edge protections, anti-icing spring flaps (made of spring steel \varnothing 10 mm) and high-quality, height-adjustable support wheels.

By the great variety of flexible hitch systems for communal tractors and yard loaders you can apply the V-series snow blades individually and in a number of ways in winter road maintenance. The integrated levelling system also ensures consistently effective clearance results.

If your carrier-vehicle does not have a second double-acting hydraulic control circuit, you can make the desired swivel adjustments of your snow blade by means of an electric switch valve, which is available on option.

Accessories:

- ▶ Reinforced, heavy-duty wheels
- ▶ Electric switch valve for swivel operation
- ▶ Side marker lights, LED, 12/24 V with reflective strips, left/right
- ▶ Holders for warning flags
- ▶ Warning flags, made of flexible and rounded material
- ▶ Customised colour as per RAL colour chart (standard: RAL 2002)
- ▶ Comfort control system: At the push of a button, you can adjust – in straight position – the wings from right/left to Y or V shape.

| | | | | | | | | |
|---|------|----------|----------|----------|----------|----------|----------|----------|
| ADLER-Vario-Snow Blade V-series | 135 | 150 | 180 | 210 | 240 | 270 | 300 | 330 |
| Clearance widths in V, Y and diagonal position (at 30° angled position) | 121 | 129 | 155 | 190 | 215 | 235 | 258 | 289 |
| Blade height outside/inside | mm | 550/650 | 550/650 | 550/650 | 750/900 | 750/900 | 750/900 | 750/900 |
| Wheels | Ø/mm | 180 x 50 | 180 x 50 | 180 x 50 | 200 x 80 | 200 x 80 | 200 x 80 | 200 x 80 |
| Weight (without mount) | kg | 185 | 190 | 200 | 353 | 389 | 412 | 465 |



V-series attached to yard loader



Also available in working widths from 135 cm up to 330 cm



Electric switch valve with overload protection provided by two pressure relief valves and nitrogen bubble



Yard loader with levelling system and parking stand



All possible clearance configurations in V, Y and diagonal position

DEVELOPED &
PRODUCED IN
GERMANY



Breaking the ice!

Salt Spreader ST-E

- ▶ 120 oder 200 Litres Volumen
- ▶ 12-volt operation
- ▶ Smartphone control via Bluetooth, no laying of control cable required
- ▶ With agitator and intelligent anti-blockage control as standard
- ▶ Spread width of up to 6 m
- ▶ Rotational speed and dosage regulated via smartphone as standard
- ▶ Several universal attachment systems
- ▶ Completely made of stainless steel
- ▶ Specially manufactured PE salt tank

Cable is history!
Featured as standard:
Including smartphone for control via Bluetooth



KTL
& powder

Profile

ADLER-Salt Spreader ST-E

Safety for winter roads!

The ST-E Salt Spreader comes with a 120- or 200-litre plastic composite tank held in a sturdy frame. The tank is equipped as standard with an additional gear drive agitator, a water-tight hinged lid and a leak-free drain plug. Rotational speed and spread rate can be conveniently controlled from the driver's seat. The ST-E Salt Spreader is also fitted with a powerful 12 volt geared motor for the spreader plate. The working width is continuously adjustable from 1 to 6 m.

Attachment systems:

- ▶ Universal attachment system for fork lift trucks and yard and wheel loaders is height adjustable and features tilt function
- ▶ Kat. I/II three-point hitch
- ▶ Hitch triangle
- ▶ Pick-up
- ▶ Scharmüller / Rockinger hitch

Accessories:

- ▶ Speed-dependent, GPS-based quantity control
- ▶ LED lighting set, 12/24 V, as per traffic regulations

| ADLER-Salt Spreader | | ST-E 120 | ST-E 200 |
|--|--------|---|---------------------------------|
| Tank capacity | Litres | 120 | 200 |
| Speed adjustment | | Variable | Variable |
| Spreader plate motor | | Geared motor with splash water protection | |
| Separate agitator (fitted as standard) | | Driven by geared motor | Driven by geared motor |
| Casing | | V2A/V4A stainless steel, 2.5 mm | V2A/V4A stainless steel, 2.5 mm |
| Weight without mount | kg | 48 | 56 |
| Area performance | m² | e.g. 60,000 m2 per hour 10 km/h | |

Featured as standard:

Rotational speed & spread rate controlled from the driver's cab.

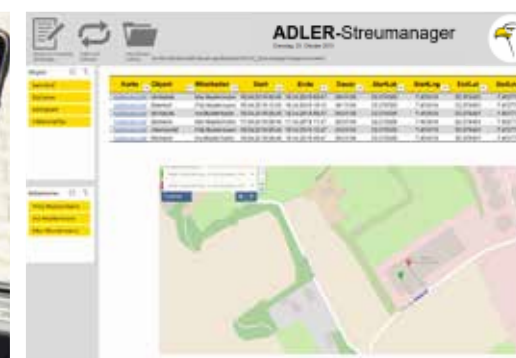
Salt spreader attached to a yard/wheel loader

Universal mount system, hinged

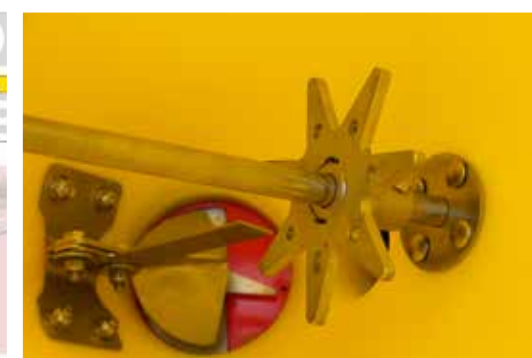
Salt Spreader with side panel support



Rotational speed and spread rate can be conveniently adjusted from the driver's cab via smartphone



With the optional GPS function you will now receive additionally free of charge our ADLER spreading manager with spreading proof



Developed by ADLER, the beater and agitator system prevents bridging in the road grit

Smartly connected ...

SmartBox

- ▶ Easy control of all implements via Bluetooth – also possible for products of other manufacturers
- ▶ Uncomfortable cables are no longer in your way!
- ▶ Saving of costs and time, because the laying of control cables is omitted
- ▶ Plug & Play, the ADLER-App is being pre-installed on the smartphone

Also for control of
products of other
manufacturers!

DEVELOPED &
PRODUCED IN
GERMANY



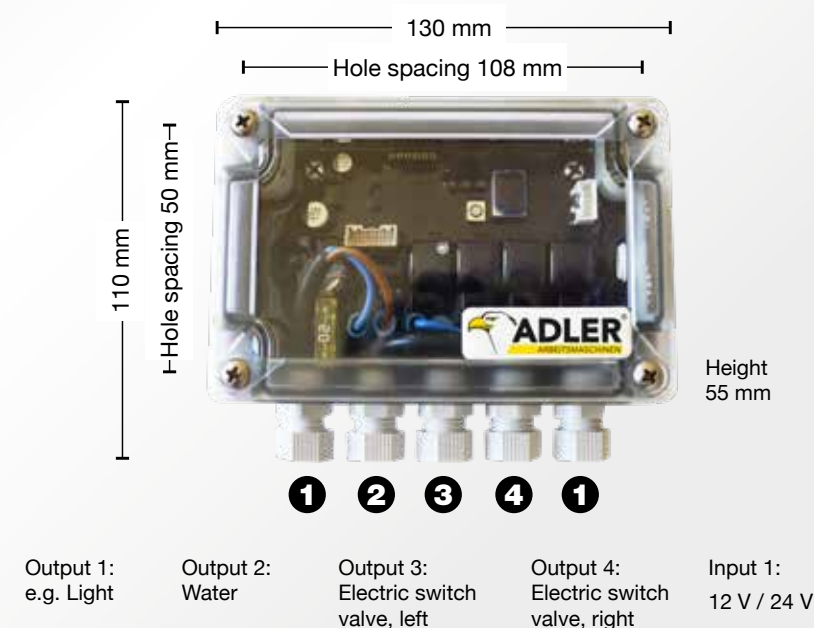
KTL
& powder

Profile ADLER-SmartBox

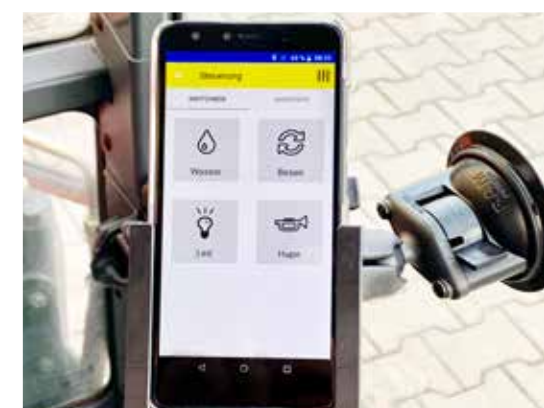
Now in the App Store



- ▶ Easy control of all implements via Bluetooth - also possible for products of other manufacturers
- ▶ Saving of costs and time, because the laying of control cables is omitted
- ▶ Damaged cables will no longer be a problem!
- ▶ Easy programming of all functions in the pre-installed app
- ▶ ADLER-SmartBox including Smartphone and ADLER-App for control via Bluetooth (on option, also without Smartphone)
- ▶ Up to four users can be connected in a SmartBox.
- ▶ In the App all functions can be configured according to your requirements.
- ▶ All users can be controlled as a switch-, feeler- or with time function.
- ▶ 12- or 24 V feed pipe required



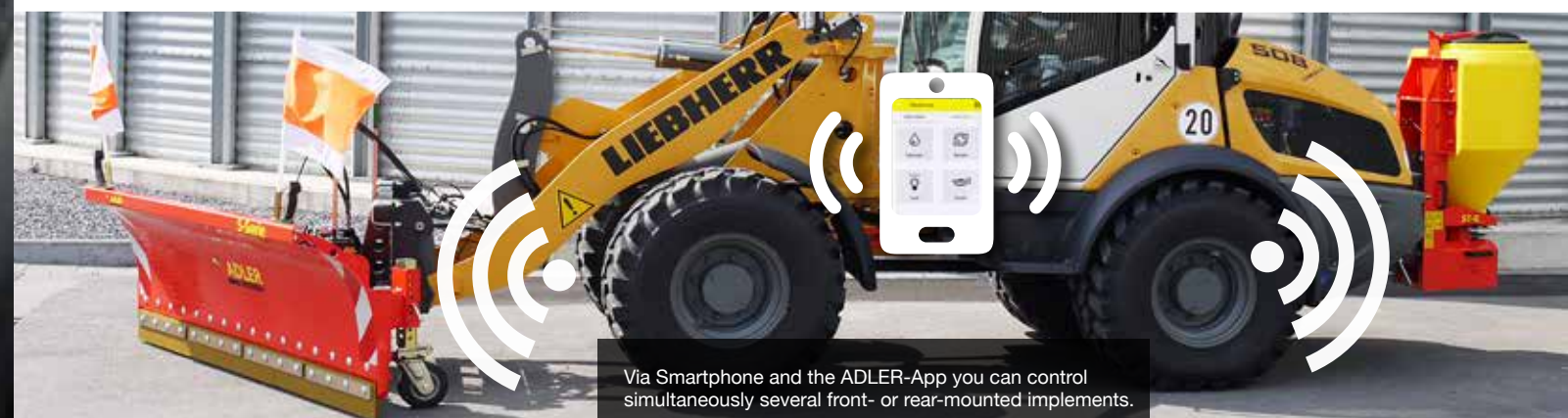
Easy control of all implements via Bluetooth, also possible for products of other manufacturers



Startup screen of Smartphone control



Freely programmable switch, feeler or timer



Via Smartphone and the ADLER-App you can control simultaneously several front- or rear-mounted implements.

Make sweeping changes!

Walk-Behind Sweeper HU 6.5 / HK 6.5 / HK 5.5

- ▶ 75/100 cm working width
- ▶ Hydraulic drive for driving and sweeping modes
- ▶ Differential transmission as a standard feature
- ▶ Large drive wheels
- ▶ Rod steering system instead of Bowden cables
- ▶ Stepless traction drive backwards/forwards on HK 6.5



Profile

ADLER-Walk-Behind Sweeper HU 6.5 / HK 6.5 / HK 5.5

For professional use!

Over the years, this sweeper has also proven itself to be a great help in winter: smaller amounts of snow can be quickly cleared with a snow brush whereas the easy-to-attach snow blade allows you to eliminate larger amounts of snow as well. In designing this sweeper, we have avoided using cold-sensitive Bowden cables for the traction drive and installed a high-quality rod steering system instead. This means our HK-series is always ready for use, even at sub-zero temperatures. The sweeper's powder coating, robust manufacturing and low maintenance hydraulic drive guarantee a long service life.

Accessories:

- ▶ Sweeper front attachment for HU 6.5
- ▶ Weed brush 3D for HU 6.5
- ▶ Hopper
- ▶ Rotary side brush
- ▶ Snow brush
- ▶ Snow blade
- ▶ Snow chains

| ADLER-Walk-Behind Sweeper | HU 6.5 | HK 6.5 | HK 5.5 |
|---|---|----------------------------|----------------------------------|
| Function | Carrier tool without attachment | Sweeper | |
| Accessories: | | | |
| Snow brush Working width / Brush diameter | 100 cm / Ø 600 mm | - | |
| Sweeper front attachment Working width / Brush diameter | 100 cm / Ø 320 mm | 75 cm / Ø 320 mm | |
| Hopper Working width | 100 cm | | 75 cm |
| Hydraulic rotary side brush | ✓ | | - |
| Snow Blade with rubber edge | 115 cm | | 95 cm |
| Snow chains | ✓ | ✓ | ✓ |
| 3D Weed Brush (various brush types possible – see HW 5.5 3D Page 34) | see page 34 | - | - |
| Drive motor | Honda GX 200 5,8 HP (4,3 kW) | | Honda GCV 170 4,8 HP (3,6 kW) |
| Traction drive | hydraulic/continuously adjustable (forward and backwards) (0 - 4,2 km/h) | | forward (0 - 3,7 km/h) |
| Direction of brush rotation | rotates in both directions – Speed hydraulically adjustable | rotates in both directions | rotates in one direction |
| Gearbox | Differenzial | | |
| Tyres | 480 / 4.00-8 | | |
| Finish | powder coating | | |



HU 6.5: universal carrier for many various tools



Flexible sweeper front attachment for HU 6.5



Hopper for the HU and HK 6.5 – Ideal for use with rotary side brushes



Walk-Behind Sweeper with rotary side brush



HU 6.5 Snow Blade for winter service



Weed brush attachment 3D for mounting to the HU 6.5



DEVELOPED &
PRODUCED IN
GERMANY



Scraping-mad

Weed Brush HW 5.5 3D



Profile ADLER-Weed Brush HW 5.5 3D

For professional use!

- Hydraulically driven Weed Brush for convenient weed clearing
- Conveniently adjustable 3D brush head
- Environmentally friendly cleaning of paths and surfaces without pesticides
- Clockwise / anti-clockwise sweeping as a standard feature
- Ideal for horticulture, agriculture and municipal use

Accessories:

- Universal brush (flat wire/wave-wire)** – recommended as standard for most places
- Steel wire rope (plaited)** – excellent for surfaces with dense weed growth
- Flat wire brush** – eminently suitable for removing mosses and smaller weeds
- Radial sweeper** – effective for heavy and stubborn dirt with a working width of 70 cm
- Adjustable protective guard** – against flying fragments, like dirt and little stones

Technical specifications:

| | |
|-----------------------------|---------------------------------------|
| Brush diameter | 60-70 cm corresponding to material |
| Brush adjustment | via spindle with crank lever |
| Brush drive | Brush drive |
| Direction of brush rotation | rotates in both directions |
| Drive motor | Honda GCV 170: 4,8 HP (3,6 kW) |
| Wheels | 480/4.00-8 tyres |
| Finish | Powder coating |
| Emergency stop switch | Featured as standard |
| Support wheel | Featured as standard |



Depending on the area of application the support wheel can be comfortably folded in and out.



Easy to work close to edges.



Stepless adjustment of handlebar height



Conveniently adjustable 3D brush head



100%
without
chemistry

KTL
& powder



Scraping-mad

Weed Brush Attachment W-Series

incl. radio remote control

Profile ADLER-Weed Brush Attachment W-series

- ▶ High-performance, hydraulically driven weed brush with brush 800 mm in diameter
- ▶ Perfect for clearing large areas of weeds quickly
- ▶ Universal attachment for all standard carrier vehicles
- ▶ Available as a basic or professional machine with many hydraulic functions and radio remote control

Accessories:

- ▶ Hydraulically adjustable swivel range
- ▶ Hydraulically adjustable longitudinal and lateral inclination
- ▶ 8-channel radio remote control 12 or 24 volts for fully hydraulic use of weed brush
- ▶ Height-adjustable support wheel 200 mm x 80 mm
- ▶ 3/4" Flow-control valve for hydraulic flow rates > 75 l/min.
- ▶ Various brush attachments

Equipment variants:

based on the hydraulic connections available on the carrier vehicle

| 1 x double-acting (snap-in function recommended) | 1 x double-acting + electric switch valve 12 V | 2 x double-acting | 4 x double-acting or 1 x double-acting with radio remote control |
|--|--|-------------------|---|
| | | | |
| - | | | |
| - | - | - | |
| - | - | - | |



Radio remote operation for convenient control in the cab



Heavy brush head with protective side guard



Universal attachment with lateral pivoting



Hydraulically adjustable grade and transverse slope, on option also mechanical adjustment possible



Mechanical or hydraulic swivel arm for treatment of large surfaces



100%
without
chemistry

CTL
& powder

ADLER-Heater –

Don't give weeds a chance!



ADLER-Heater Flexi 350 / 500



Damage to weeds visible after only 1 to 2 days.



ADLER-Heater 500 / 750 E



ADLER-Heater 1000 / 1400
Front mounting



ADLER-Heater 1000 / 1400
Rear mounting

What is thermal weed control?

Thermal weed control methods can be used on practically all surfaces and always work according to the same principle. The application of thermal energy to the surface of the plants destroys the cell structure of the vegetative fibre. The water which is transported from the root to the leaf cells evaporates and makes the plant dry up after a short time already. Furthermore, proteins are denatured whereby vital processes such as photosynthesis are being interrupted. As a result the damaged plant material dies.



Infrared radiation produced by the approx. 1000-°C ceramic infrared emitter destroys the cell structure and protein of the surface of the plant and reduces the germination capacity of existing seeds. Damage to weeds are recognizable after only 1-2 days.

The temperature required to achieve this damaging effect is only approx. 60 - 70 °C.

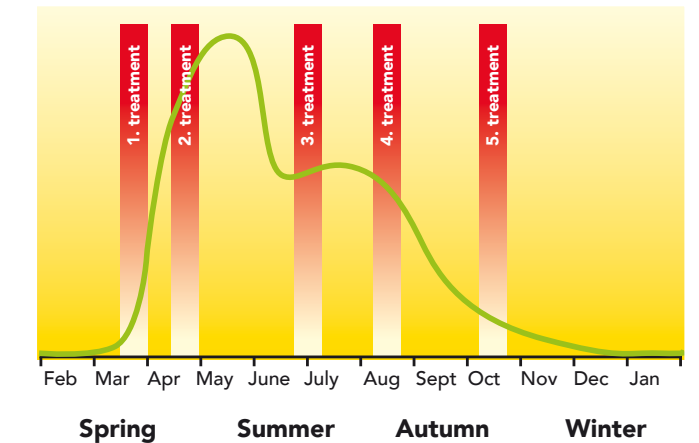
Repeated treatment continuously weakens the root system, making it difficult to generate new growth. The plant dies as a result.

This method is therefore particularly effective for young plants and annual weeds. Long-term successful control of root herb-spreading depends on the regular repetition of treatment. How often this procedure must be repeated depends on the individual requirements of the user.

DEVELOPED &
PRODUCED IN
GERMANY

Effect on seeds:

When exposed to direct heat, the seeds lose their germination capacity or are even stimulated to germinate. When treated promptly, fresh weed growth can therefore be sustainably controlled.



Example of growth patterns of grasses and possible treatment periods. Actual treatment intervals depend heavily on the type of weed, vegetation and the surface to be treated.

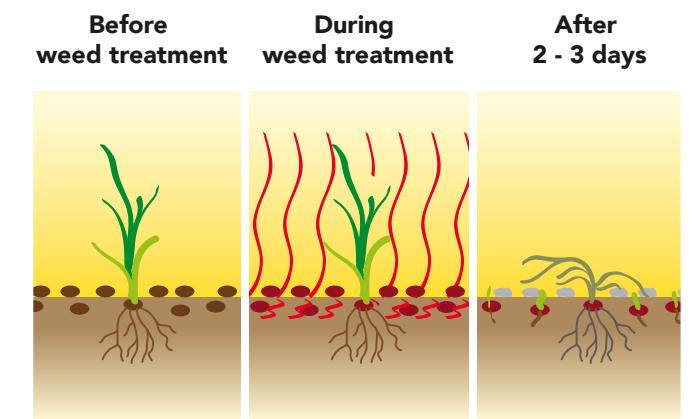


Diagram of ADLER Heater process steps

The ADLER Heaters use sophisticated infrared technology and offer a number of advantages compared to other methods.

- ▶ Clear restriction of operating area
- ▶ No noise exposure
- ▶ Low gas consumption
- ▶ Extremely short set-up times



DEVELOPED &
PRODUCED IN
GERMANY



ADLER-Heater Flexi 350 / 500

Profile ADLER-Heater Flexi 350 / 500

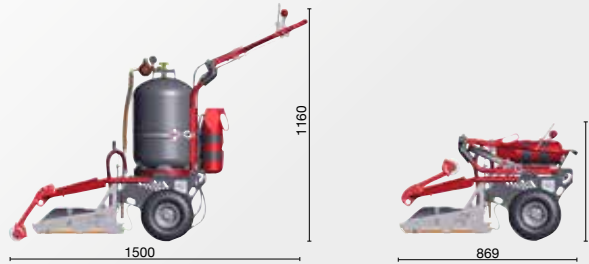
- ▶ Clear limitation of operating area
- ▶ Plug and Play: Connect gas cylinder, light and get going
- ▶ Flexible use in tight spaces (traffic islands, bus stops, etc.) thanks to single-axle design and swivel-mounted burner
- ▶ Compact dimensions for ease of transport
- ▶ Practically noiseless operation

Accessories:

- ▶ Hand-held burner for difficult-to-access spots

Technical specifications:

| ADLER-Heater | | Flexi 350 | Flexi 500 |
|----------------------------------|------|------------------------------------|------------------------------------|
| Working width | mm | 350 | 500 |
| Dimensions in operating position | mm | L 1.500 x W 352 x H 800 - 1.300 | L 1.500 x W 536 x H 800 - 1.300 |
| Dimensions in transport position | mm | L 869 x W 352 x H 610 | L 845 x W 536 x H 495 |
| Number of infrared emitters | | 2 | 3 |
| Ignition | | electrical | electrical |
| Weight (without gas cylinder) | kg | 43 | 51 |
| Thermal output | kW | 13 | 19,5 |
| Infrared emitter fuel | | 11 kg- / 5 kg-propane gas cylinder | 11 kg- / 5 kg-propane gas cylinder |
| Capacity per gas cylinder | h | about 10 / about 4,5 | about 7 / about 4,5 |
| Working speed | km/h | 1,0 - 1,5 | 1,0 - 1,5 |
| Area performance | m²/h | to zu 525 | to zu 800 |



The front wheel ensures that the infrared emitter is positioned at the optimum working height.



Optimum weight distribution makes the Flexi comfortable to work with.



By tilting the emitter to the right or left, even edges can be easily treated.



The ADLER-Heater Flexi in working widths 350 mm and 500 mm.



The Flexi folds quickly and its compact design makes it fit in almost any boot.



The hand-held burner allows treatment of even difficult-to-access terrain.



ADLER
infrared
technology

100%
without
chemistry

KT
L
& powder



ADLER-Heater 500 / 750 E



ADLER
infrared
technology

100%
without
chemistry

CTL
& powder

Profile ADLER-Heater 500 / 750 E

- ▶ Silent, thermal weed control using infrared light and electric drive
- ▶ Low gas consumption and low CO₂ emissions
- ▶ No sweeping action and no damage to the ground
- ▶ Suitable for water-bound pathways and surfaces

Accessories:

- ▶ Hand-held burner for difficult-to-access spots

Technical specifications:

| ADLER-Heater | | 500 E | 750 E |
|---|------------------|--------------------------------------|--------------------------------------|
| Working width | mm | 500 | 750 |
| Basic device dimensions | mm | L 1.495 x W 532 x H 829 | L 1.495 x W 703 x H 829 |
| Number of infrared emitters | | 3 | 4 |
| Weight (without gas cylinder or hand-held burner) | kg | 108 | 128 |
| Ignition | | electrical | electrical |
| Drive | | electrical | electrical |
| Battery power supply | Ah | 17 | 17 |
| Battery capacity | h | 2 - 5 | 2 - 4 |
| Infrared emitter fuel | | 11 kg-propane gas cylinder | 11 kg-propane gas cylinder |
| Gas consumption | kg/h | up to 2.3 (without hand-held burner) | up to 3.0 (without hand-held burner) |
| Capacity per gas cylinder | h | app. 5 | app. 3,5 |
| Working speed | km/h | up to 2 | up to 2 |
| Noise exposure | dB | < 40 | < 40 |
| Area performance per hour | m ² | up to 1.000 | up to 1.500 |
| Overall cost/m including - 4-year depreciation - 5 hours/day - 100 days/year | €/m ² | 0,02 | 0,02 |



Hand-held burner for difficult-to-reach corners and edges



Large drive wheels and differential transmission ensure optimum manoeuvrability and effortless work



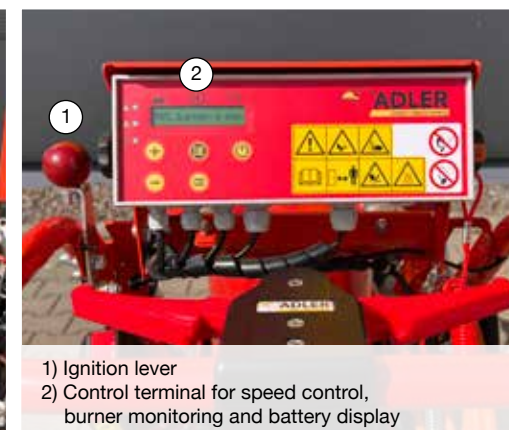
Infrared radiation without naked flame



Height-adjustable infra box to adapt to road, path and surface conditions



- 1) Emergency stop with safety rope for drive stop
- 2) Hose holder for the hand torch
- 3) Coupling lifter for drive / engine brake / freewheel
- 4) Battery compartment



- 1) Ignition lever
- 2) Control terminal for speed control, burner monitoring and battery display



Driving lever for 1) forward and 2) backwards



ADLER-Heater 1000 Light



Profile ADLER-Heater 1000 Light

- ▶ For thermal processing of large areas
- ▶ Lightweight design, ideally suited for carrier vehicles with little lifting power
- ▶ Rear carrier with LPG gas tank – also suitable for transport on loading platforms
- ▶ With radio remote control as standard

Accessories:

- ▶ Hand torch for hard accessible corners and edges
- ▶ Side shift

Technical specifications:

| | | |
|---|-------------|--|
| ADLER-Heater | | 1000 Light |
| Working width | mm | 1.000 |
| Dimensions (without mount) | mm | L 1.350 x W 1.150 |
| Number of infrared emitters | | 6 |
| Radiated surface | mm | L 740 x W 1.039 |
| Weight (without gas or mount) | kg | about 265 |
| Ignition | | Electric via radio remote control |
| Required connectors | | 12 volt (1 x attachment device) |
| Infrared emitter fuel | | LPG autogas or propane |
| Gas consumption | kg/h l/h | about 6 about 12 |
| Coverage per gas filling | | approx. 8 working hours (120 l gas tank) |
| Working speed | km/h | 2 - 3 |
| Noise exposure (without vehicle) | dB | < 40 |
| Area performance per hour | m² | 2.000 - 3.000 |
| Overall cost - including 4-year depreciation € - 5 hours/day - 100 days/year | €/m² | 0,01 |



Indicator for height adjustment and signal lamps for infra box operating control



Radio remote control with suction bracket and emergency off button



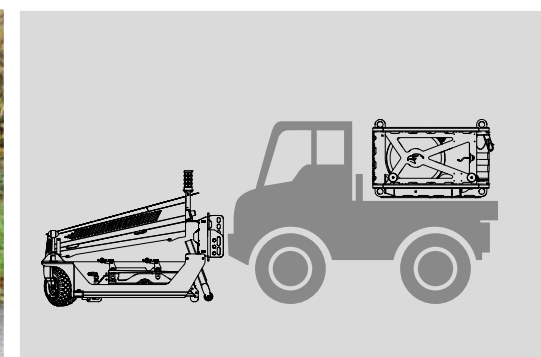
Hydraulic side shift



Rear tank carrier for 80 l and 120 l gas tanks



Optimal weight distribution



Gas tank direct mounting on carrier vehicle



ADLER-Heater 1000 / 1400

Now new:
With metal fibre radiators
made of stainless steel



ADLER
infrared
technology

100%
without
chemistry

CTL
& powder

Profile ADLER-Heater 1000 / 1400

- ▶ For the thermal processing of large surfaces
- ▶ Suitable for water-bound pathways and surfaces
- ▶ Equipped with radio remote control as standard
- ▶ ADLER plug & play:
 1. Easy to attach to many carrier vehicles
 2. Connect to 12-volt supply
 3. Start via radio remote control and get going

Accessories:

- ▶ Hand-held burner for difficult-to-reach corners and edges
- ▶ Hose reel for the hand torch for the extension to a 15 m hose

Technical specifications:

| | | | |
|---|------------------|--|--|
| ADLER-Heater | | 1000 | 1400 |
| Working width | mm | 1.000 | 1.400 |
| Dimensions (without mount) | mm | L 1.600 x W 1.127 | L 1.600 x W 1.462 |
| Number of infrared emitters | | 6 | 8 |
| Radiated surface | mm | L 740 x W 1.039 | L 740 x W 1.381 |
| Weight (without gas or mount) | kg | about 300 | about 410 |
| Ignition | | Electric via radio remote control | |
| Connections required | Electrical | 12 volt (1 x attachment device) | |
| | Hydraulic | 1 x double-acting (for hydr. side shift) | |
| Infrared emitter fuel | | LPG autogas | |
| Gas consumption | kg/h l/h | about 6 about 14 | about 8 about 18 |
| Reach per gas filling | | approx. 8 working hours (120 l gas tank) | approx. 8 working hours (150 l gas tank) |
| Working speed | km/h | 2 - 3 | |
| Noise exposure (without vehicle) | dB | < 40 | |
| Area performance per hour | m ² | 2.000 - 3.000 | 2.800 - 4.200 |
| Overall cost including - 4-year depreciation € - 5 hours/day - 100 days/year | €/m ² | 0,01 | 0,01 |



Indicator for height adjustment and signal lamps for infra box operating control



Use in front and in rear operation possible



Available on option:
Hand-held burner kit incl. 15 m-hose reel



Radio remote control with suction bracket and emergency off button



Now NEW:
With stainless steel metal fibre radiators



Side fill inlet for LPG autogas



Hydraulic side shift 20 cm to the left and right



Mount options for your ADLER



Wheel loader hitch with roller guide system and 3D levelling



Combined wheel loader/fork lift attachment incl. roller guide system and 3D levelling



Unimog Attachment incl. lifting system acc. to DIN 76060



Wheel loader hitch with roller guide system and 3D levelling

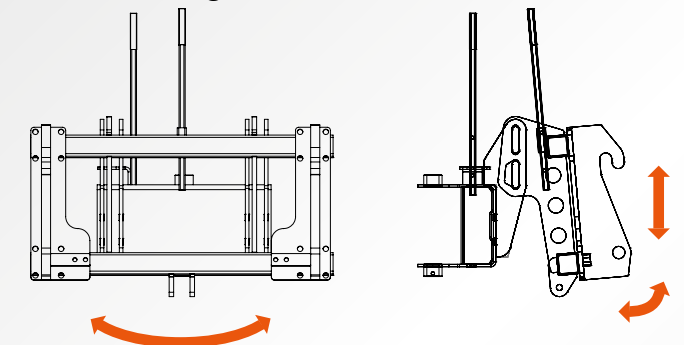


Three-point linkage, Kat. I/II

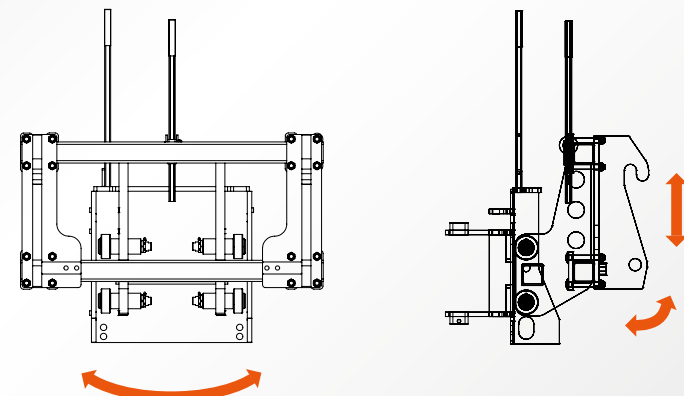


Communal triangle

Universal attachment incl. roller guide system and with 3D levelling:

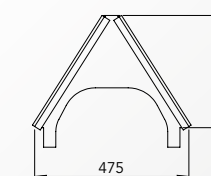


Heavy-type universal hitch incl. roller shaft system – (heavy duty) and 3D level compensation:

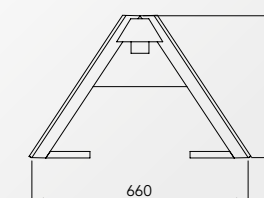


Hitch triangles:

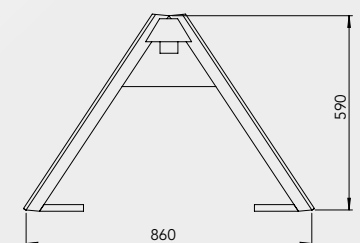
Municipal 3-point hitch
Square profile 40 mm



Kat. 0 3-point hitch
Square profile 60 mm



Kat. I-III 3-point hitch
Square profile 60 mm



Attachment plate DIN 76060, size 3 or 5, for front mounting, incl. hydr. cylinder and levelling system for an optimum adaptation to the ground contours

DEVELOPED &
PRODUCED IN
GERMANY

The ADLER-Drill Rig Range:

Ideal for well drilling –
geothermal drilling
geological exploration drilling
probe drilling

Save time

- ▶ Quickly transported
- ▶ Short set-up times
- ▶ Start work without delay

Reduce costs

- ▶ Maximum priceperformance
- ▶ Low investment costs
- ▶ Easy maintenance

Impress customers

- ▶ Gentle on gardens
- ▶ Fits through standards doors
- ▶ Engine with noise insulation

DEVELOPED &
PRODUCED IN
GERMANY



Suitable for
trailers,
approved
up to 3.5 t



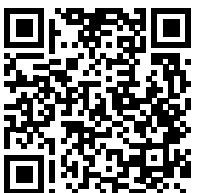
Transportation on
lorry required
starting from
series B 50



Can pass
through doorways



Safety device around
rotating pipe fitted as
standard



More information on our
Drill Rig website

B 15

Kubota engine: 15 HP
Extraction force: 9 kN
Weight: app. 1.3 t

▶ down to 25 m!

B 25

Kubota engine: 25 HP
Extraction force: 12 kN
Weight: app. 1.6 t

▶ down to 50 m!

B 50

Deutz engine: 50 HP
Extraction force: 23 kN
Weight: app. 2.5 t

▶ down to 100 m!



B 75

Deutz engine: 75 HP
Extraction force: 23 kN
Weight: app. 3.5 t

▶ down to 150 m!



also available:
B75 pro

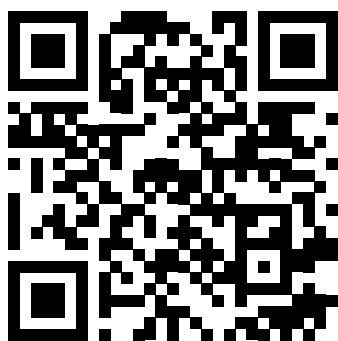
Attachment Drill Rig

ABL

For excavators
from 1.5 to 30 t.
We also manufacture
in compliance with
your wishes!



PRODUCING QUALITY.



www.adler-arbeitsmaschinen.de



ADLER Arbeitsmaschinen GmbH & Co. KG

An den Bahngleisen 28 · 48356 Nordwalde · Germany

Tel.: +49 (0) 25 73/97 999-0 · Fax: +49 (0) 25 73/97 999-40

info@adler-arbeitsmaschinen.de

All information in this brochure is based on the best knowledge available to us and has been carefully checked. No liability is accepted.
2024/02 (GB) We reserve the right to modify dimensions, weight and technical data.
Conceptual design & layout: www.werbeagentur-willers.de