



PRODUCING QUALITY.

# Our Drill Rig Range

## Ideal for:

- Well drilling
- Geothermal drilling
- Geological explorations
- Explosive ordnance detection
- Probe drilling
- Screw foundations



[www.adler-arbeitsmaschinen.de](http://www.adler-arbeitsmaschinen.de)



# The ADLER-Drill Rig Range:

Ideal for

- Well drilling
- Geothermal drilling
- Geological explorations
- Explosive ordnance detection
- Probe drilling
- and Screw foundations!



Suitable for trailers, approved up to 3.5 t  
Approved for use up to B 50



Transportation on lorry required starting from series B 50



Can pass through doorways



Find all information about our Drill Rig programme here:



## Attachment Drill Rig ABL

For excavators from 2 t to 30 t  
We also manufacture in compliance with your wishes!



## B 15

Kubota-Engine: 15 HP  
Retraction force: 9 kN  
Weight: from 1.4 t

► down to 25 m!



## B 25

Kubota-Engine: 25 HP  
Retraction force: 12 kN  
Weight: from 1.6 t

► down to 50 m!



## B 50

Deutz-Engine: 50 HP  
Retraction force: 23 kN  
Weight: from 2.7 t

► down to 100 m!



## B 75

Deutz-Engine: 50 HP  
Retraction force: 23 kN  
Weight: from 3.2 t

► down to 125 m!



## B 75 pro

Deutz-Engine: 75 HP  
Retraction force: 50 kN  
Weight: from 3.5 t

► down to 150 m!



## B 75 geo pro

Deutz-Engine: 75 HP  
Retraction force: 50 kN  
Weight: from 6.5 t

► down to 150 m!





## Breaking new ground ...

# Powerful drilling solutions for highly confined spaces.

Our drill rigs are used for well drilling, geothermal drilling and geological exploration drilling. We can also provide you with solutions for almost all types of piling mode. The low weight and compact design enable you to reduce your investment costs to a minimum. Our technology is innovative, allowing you to achieve excellent performance with minimal effort. We can equip our B-series drill rigs with customised features to meet your requirements.

We offer six compact drill rigs in different performance categories to suit the required drill depth and soil characteristics.

**Ideal for Well drilling**  
**Geothermal drilling**  
**Geological explorations**  
**Explosive ordnance detection**  
**Probe drilling**  
**and Screw foundations!**

The powerful B-series compact Drill Rigs allow you to make drill holes even in locations which are difficult to access. With a transport width of up to 90 cm and a height of just 195 cm, these Drill Rigs will fit through standard doors, enabling you to access any building. The standard chain chassis ensures that you reach your drilling location even on difficult terrain. Our small and compact Drill Rigs also ensure that you can travel to the site easily right from the start: All you need is a car trailer to transport them to the site.



save time

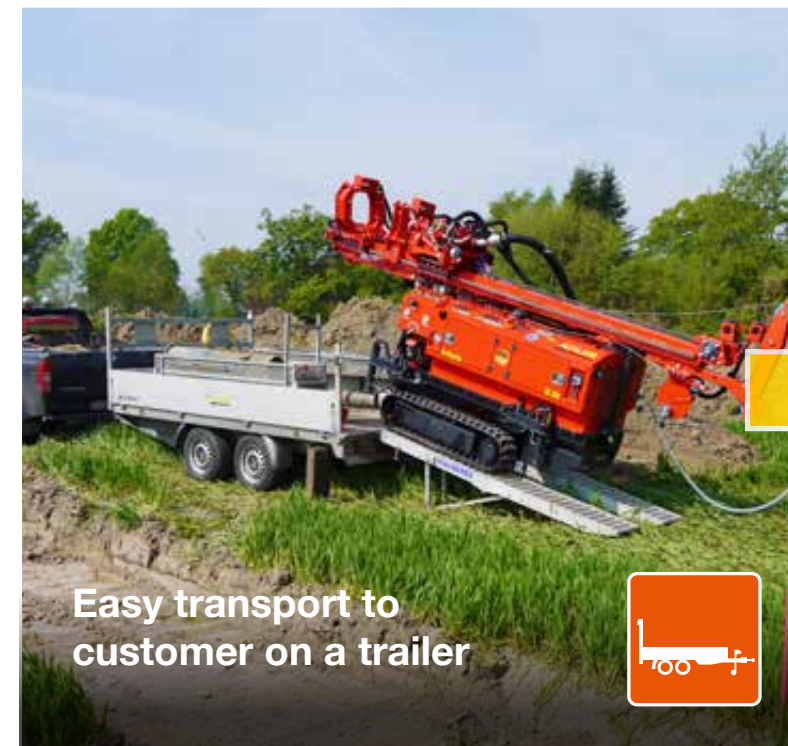
reduce costs

impress customers

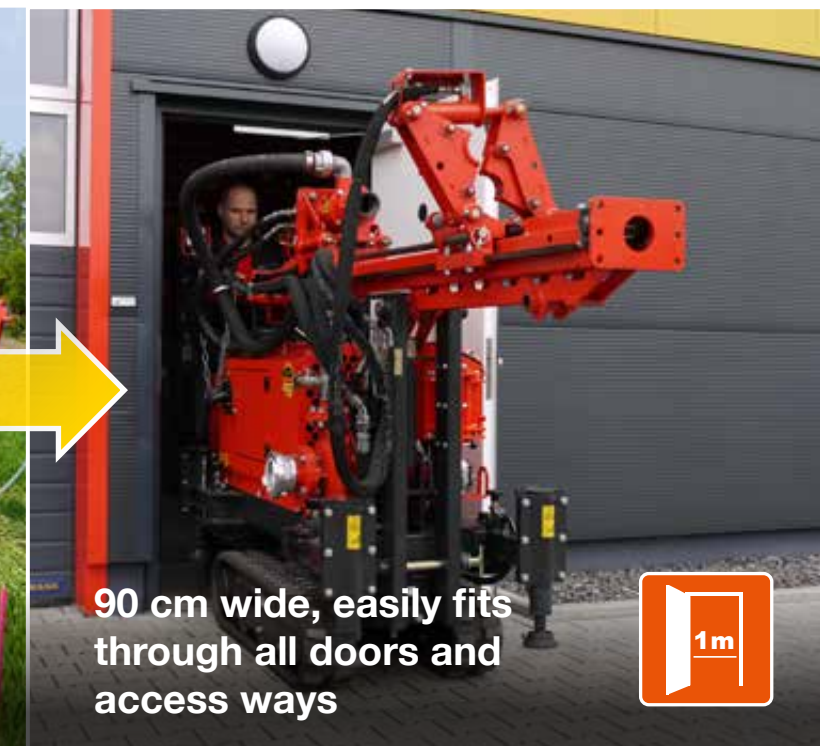
**ADLER-drill rigs**  
**B 15 to B 50**

- ▶ quickly transported
- ▶ short set-up times
- ▶ start work without delay
- ▶ maximum price-performance
- ▶ low investment costs
- ▶ easy maintenance
- ▶ gentle on gardens
- ▶ fits through standards doors
- ▶ Engine with noise insulation

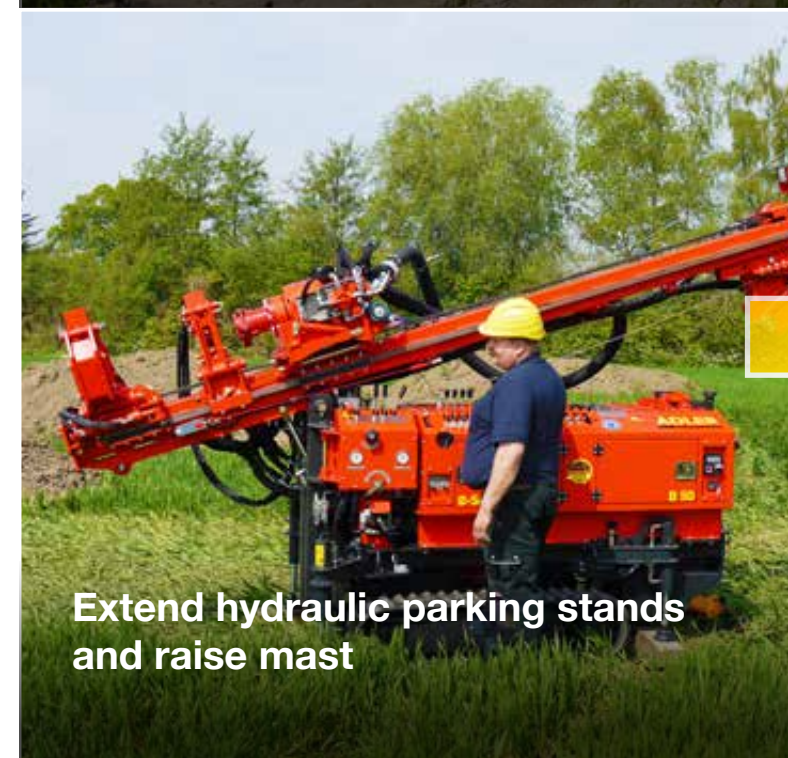
DEVELOPED &  
PRODUCED IN  
GERMANY



Easy transport to customer on a trailer



90 cm wide, easily fits through all doors and access ways



Extend hydraulic parking stands and raise mast



Without much effort the B-series is ready for operation in only a few minutes



DEVELOPED &  
PRODUCED IN  
GERMANY



## Drill rig B 15

- ▶ inexpensive starter rig for easy to medium-heavy soils
- ▶ ideal for depths down to approx. 25 m for drilling diameters of about 150 mm
- ▶ basic drill for geological explorations
- ▶ low base weight of around 1.4 t and machine width of 80 cm enable you to work in difficult-to access drilling locations

down to 25 m!



### Characteristics of B 15

Flush drilling*	Depth: 25 m	Diameter: 150 mm
Down-the-hole hammer drilling*	Depth: 25 m	Diameter: 120 mm
Dry drilling*	Depth: 10 m	Diameter: 110 mm
Hollow stem auger procedure*	-	
Subsoil assessment		✓
Probing for unexploded bombs		✓

\*) The values given are for orientation and may vary depending on the soil conditions.

### Technical specifications

Drive unit (Kubota engine)	2 cyl. / 11 kW / 15 HP diesel
Fuel tank capacity	30 l
ADLER-Crawler Undercarriage F 17	Width: 725 mm - 1,125 mm (telescopic)
Support feet	4 x mechanical
Drill pipes	1.5 m
Travel range	1.8 m
Feed	6 kN
Retraction force	9 kN
Feed system	Hydraulic engine with roller chain
Hydraulic drill head with lateral rinsing head clearance	ABK 315: 90 daNm / 65 rpm 2"
Hydraulic drill head with transmission (2-speed) clearance 2 1/2"	optional
Mud pump	max. 30 m³/h - max. 3 bar
Lifting clamp clearance/ lifting force/stroke	up to Ø 219 mm / 80 kN / 200 mm
Offset drilling	-
Hydraulic cable winch: Tractive force/cable length/cable Ø	5 kN / 30 m / 6 mm
Cable remote control for traction drive	-
Transport dimensions (L / W / H)	3,250 / 800 / 1,950 mm (with safety guard)
Weight of basic machine	from 1.4 t



B 15 the compact drill rig for shallow depths



The mud pump can be integrated into the B15 drill rig on request



Operating station to control the drilling process



Accessories for flush drilling



Hydraulic drill pipe breaker



Mechanical support feet as standard







# Drill rig B 25

- ▶ convenient all-rounder at premium price
- ▶ ideal for depths down to approx. 50 m for drilling diameters of about 150 mm
- ▶ excellent for geological exploration drilling and subsoil assessments
- ▶ powerful, compact machine (only 90 cm wide) with many options for use

Further drill rig applications  
see the „Specialists“ on page 24

down to 50 m!



## Characteristics of B 25

Flush drilling*	Depth: 50 m	Diameter: 150 mm
Down-the-hole hammer drilling*	Depth: 50 m	Diameter: 120 mm
Dry drilling*	Depth: 15 m	Diameter: 180 mm
Hollow stem auger procedure*	Depth: 15 m	Diameter: 180 mm
Subsoil assessment		✓
Probing for unexploded bombs		✓

\*) The values given are for orientation and may vary depending on the soil conditions.

## Technical specifications

Drive unit (Kubota engine)	3 cyl. / 18.5 kW / 25 HP diesel
Tank capacity	30 l
ADLER-Crawler Undercarriage F 17 ADLER-Crawler Undercarriage F 25 (optional)	Width: 725 mm - 1,125 mm (telescopicable) Width: 775 mm - 1,175 mm (telescopicable)
Support feet	4 x hydraulic
Drill pipes	1.5 m
Travel range	1.8 m
Feed	8 kN
Retraction force	15 kN
Mast lowering 200 mm	optional
Feed system	Hydraulic engine with roller chain
Hydraulic drill head with lateral rinsing head clearance 2"	ABK 400: 120 daNm / 90 rpm
Hydraulic drill head with transmission (2-speed) clearance 2 1/2"	1st gear (slow): 220 daNm / 45 rpm 2nd gear (fast): 110 daNm / 90 rpm Other speeds and torques possible
Mud pump	max. 50 m³/h - max. 6 bar
Lift clamp passage / Lifting force / stroke	up to Ø 219 mm / 80 kN / 200 mm
Offset drilling	optional
Hydraulic cable winch: Tractive force / cable length / cable Ø	5 kN / 30 m / 6 mm
Mast extension	optional
Cable remote control for driving and drilling	optional
Transport dimensions (L / W / H)	3,250 / 900 / 1,950 mm (with safety guard)
Weight of basic machine	from 1.6 t



Geared drill head with two switching stages



Safety device around rotating pipe fitted as standard



B 25 with offset drilling attachment



Optional for B 25: Lifting clamp for drilling cased boreholes



Winch with 5 kN (500 kg) tractive force



Operating station with all drill functions – pivot mechanism







# Drill rig B 50

- ▶ high-performance machine for many applications
- ▶ ideal for depths down to approx. 100 m with drilling diameters of about 170 mm
- ▶ professional machine for easy transport on a 3.5 t trailer
- ▶ high flushing rate via integrated pump
- ▶ extensive options such as mast lowering, mast inclination, offset drilling, etc.

down to 100 m!



## Characteristics of B 50

Flush drilling*	Depth: 100 m	Diameter: 170 mm
Down-the-hole hammer drilling*	Depth: 100 m	Diameter: 150 mm
Dry drilling*	Depth: 25 m	Diameter: 200 mm
Hollow stem auger procedure*	Depth: 20 m	Diameter: 200 mm
Subsoil assessment		✓
Probing for unexploded bombs		✓

\*) The values given are for orientation and may vary depending on the soil conditions.

## Technical specifications

Drive unit (Deutz engine)	3 cyl. / 37 kW / 50 HP diesel (emission level 5)
Tank capacity	45 l
ADLER-Crawler Undercarriage F 25 ADLER-Crawler Undercarriage F 30 (optional)	Width: 775 mm - 1,175 mm (telescopicable) Width: 780 mm - 1,180 mm (telescopicable)
Support feet	4 x hydraulic
Drill pipes	2 m
Travel range	2.3 m
Feed	15 kN
Retraction force	23 kN
Mast lowering 300 mm	optional
Feed system	Hydraulic motor with roller chain
Hydraulic drill head with lateral rinsing head clearance 2 1/2"	ABK 800: 200 daNm / 80 rpm
Drill drive	Mechanical swivelling
Hydraulic drill head with transmission (2-speed), clearance 2 1/2" transmission (3-speed) as option	1st gear (slow): 440 daNm / 50 rpm 2nd gear (fast): 220 daNm / 100 rpm Other speeds and torques possible
Mud pump	75 m³/h - 8 bar
Lift clamp passage / Lifting force / stroke	up to Ø 219 mm / 100 kN / 200 mm
Offset drilling	optional
Winch hydraulic Traction force / rope length / Ø rope	5 kN / 30 m / 6 mm (optional 10 kN / 50 m / 8 mm)
Mast extension	optional
Cable remote control for traction drive	✓
Cable remote control for driving and drilling	optional
Transport dimensions L / W / H	4,150 / 950 / 2,050 mm (without protection equipment)
Weight of basic machine	from 2.7 t



Swiveling gearhead with continuous 2 1/2" rinse shaft



Winch with cable stopper and mast extension



Lift clamp and hydraulic drill rod breaking bracket



Mud pump "on board"



Clear operating unit for controlling the drilling rig



2-stage drill drive with torques up to 620 daNm or revolutions up to 210 rpm







## Drill rig B 75

- ▶ **Powerhouse with 75-diesel-HP and Deutz engine of the latest emission level 5**
- ▶ **extremely compact drill for difficult tasks in a small space**
- ▶ **individually configurable for Well drilling, geothermal drilling, dry drilling and geological explorations**

down to 125 m!



### Characteristics of B 75

Flush drilling*	Depth: 125 m	Diameter: 170 mm
Down-the-hole hammer drilling*	Depth: 100 m	Diameter: 150 mm
Dry drilling*	Depth: 35 m	Diameter: 200 mm
Hollow stem auger procedure*	Depth: 30 m	Diameter: 200 mm
Subsoil assessment		✓
Probing for unexploded bombs		✓

\*) The values given are for orientation and may vary depending on the soil conditions.

### Technical specifications

Drive unit (Deutz engine)	4 cyl. / 55 kW / 75 HP diesel (emission level 5)
Tank capacity	45 l
ADLER-Crawler Undercarriage F 35 ADLER-Crawler Undercarriage F 45 (optional)	Width: 835 mm - 1,235 mm (telescopicable) Width: 1,000 mm - 1,400 mm (telescopicable)
Support feet	4 x hydraulic
Drill pipes	2.0 m
Travel range	2.3 m
Feed	15 kN
Retraction force	23 kN
Mast lowering 300 mm	optional
Feed system	Hydraulic motor with roller chain
Drill drive	Mechanical swivelling (optional hydraulic)
Hydraulic drill head with transmission (2-speed), clearance 2 1/2", optional transmission (3-speed)	1st gear (slow): 440 daNm / 50 rpm 2nd gear (fast): 220 daNm / 100 rpm Other speeds and torques possible
Mud pump	max. 120 m³/h - max. 8 bar
Lift clamp passage / Lifting force / stroke	up to Ø 219 mm / 100 kN / 200 mm
Cable-crushing-lifting clamp Clamping force / stroke / lifting force / torque	up to Ø 219 mm 118 kN / 250 mm / 120 kN / 10.6 kNm
Offset drilling	optional
Hydraulic winch Traction force / rope length / Ø rope	5 kN / 30 m / 6 mm (optional 10 kN / 50 m / 8 mm)
Mast extension	optional
Cable remote control for travel drive	standard
Cable remote control for driving and drilling	optional
Transport dimensions L / W / H	4,750 / 880 / 2,200 mm (without protective device)
Weight of basic machine	from 3.2 t



Winch with cable stopper and mast extension



Hydraulic clamping bell (large) to the drill pipe and to break the outer piping up to 178 mm



Standard with swing-out control panel.



Cable-crushing-lifting clamp up to 11.8 tons retraction force



Hydraulic pivoting of the drill head from the drill centre



Drill rig B 75 equipped with 75 HP and 2.9 litre Deutz engine of the latest emission standard 5







# Drill rig B 75 pro

- ▶ extremely high retraction force of 50 kN due to extra strong mast design
- ▶ larger undercarriage and reinforced support feet
- ▶ Feed system via lifting cylinders
- ▶ Mast lowering and 3D mast lowering as standard

down to 150 m!



## Characteristics of B 75 pro

Flush drilling*	Depth: 150 m	Diameter: 170 mm
Down-the-hole hammer drilling*	Depth: 100 m	Diameter: 150 mm
Dry drilling*	Depth: 35 m	Diameter: 200 mm
Hollow stem auger procedure*	Depth: 30 m	Diameter: 200 mm
Subsoil assessment		✓
Probing for unexploded bombs		✓

\*) The values given are for orientation and may vary depending on the soil conditions.

## Technical specifications

Drive unit (Deutz engine)	4 cyl. / 55 kW / 75 HP diesel (emission level 5)
Tank capacity	45 l
ADLER-Crawler Undercarriage F 45	Width: 1,000 mm - 1,400 mm (telescopic)
Support feet	4 x hydraulic
Drill pipes	2 m
Travel range	2.3 m
Feed	15 kN
Retraction force	50 kN
Mast lowering 300 mm	standard
2D-mast tilt by 5 ° forward and laterally	standard
Feed system	with hydraulic cylinder
Drill drive	mechanical swivel (optional hydraulic)
Hydraulic drill head with transmission (2-speed) clearance 2 1/2"	1st gear (slow): 440 daNm / 50 rpm 2nd gear (fast): 220 daNm / 100 rpm Other speeds and torques possible
Mud pump	max. 120 m³/h - max. 8 bar
Lift clamp passage / Lifting force / stroke	up to Ø 219 mm / 120 kN / 200 mm
Cable-crushing-lifting clamp/ Clamping force / stroke / lifting force / torque	up to Ø 219 mm 118 kN / 250 mm / 120 kN / 10.6 kNm
Offset drilling	optional
Winch hydraulic: traction / Rope length / Ø rope	5 kN / 30 m / 6 mm (optional 10 kN / 50 m / 8 mm)
Mast extension	optional
Cable remote control for travel drive	standard
Cable remote control for driving and drilling	optional
Transport dimensions L / W / H	4,950 / 880 / 2,575 mm (without protective device)
Weight of basic machine	from 3.5 t



Mast lowering by 300 mm at B 75 per standard



3D mast tilt by 5° (forward and side) as standard



Winch with 500 kg or 1.000 kg



Fold-out control panel for the control of all important drilling functions



Powerful water pump





# Drill rig B 75 geo pro

- ▶ powerful, compact 8 t machine
- ▶ fast conversion from dry drilling with piping turntable to suction drilling or flush drilling
- ▶ excellent for dry drilling with piping turntable up to 324 mm diameter
- ▶ suction drilling up to 600 mm possible

down to 150 m!



## Characteristics of B 75 geo pro

Suction drilling	Depth: 30 m	Diameter: 600 mm
Piped drilling with piping turntable	Depth: 25 m	Diameter: 324 mm
Flush drilling*	Depth: 150 m	Diameter: 200 mm
Down-the-hole hammer drilling*	Depth: 100 m	Diameter: 155 mm
Dry drilling*	Depth: 35 m	Diameter: 219 mm
Hollow stem auger procedure*	Depth: 30 m	Diameter: 205 mm

\*) The values given are for orientation and may vary depending on the soil conditions.

## Technical specifications

Drive unit (Deutz engine)	4 cyl. / 55 kW / 75 HP diesel (emission level 5)
Tank capacity	45 l
ADLER-Crawler Undercarriage F 75	Width: 1,300 mm - 1,700 mm (telescopicable)
Support feet	4 x hydraulic
Drill pipes	2 m
Travel range	3 m
Feed	15 kN
Retraction force	50 kN
Mast lowering 1,000 mm	standard
Feed system	with hydraulic cylinder
Drill drive	hydraulically shiftable
Hydraulic drill head with transmission (2-speed), 4" clearance Transmission (3-speed), elec. switchable	1st gear: 490 daNm / 40 rpm 2nd gear: 254 daNm / 80 rpm 3rd gear: 123 daNm / 160 rpm Other speeds and torques possible
Suction pump	160 m³/h, clearance 4"
Piping turntable Clearance / Lifting force / Lift	up to Ø 335 mm / 220 daNm / 500 mm
Lift clamp passage / Lifting force / stroke	up to Ø 219 mm / 120 kN / 200 mm
Cable-crushing-lifting clamp/ Clamping force / stroke / lifting force / torque	up to Ø 219 mm 118 kN / 250 mm / 120 kN / 10.6 kNm
Offset drilling	optional
Winch hydraulic traction / Rope length / Ø rope	36 kN / 35 m / 12 mm
Mast extension	optional
Cable remote control for travel drive	standard
Cable remote control for driving and drilling	optional
Transport dimensions L / W / H	6,023 / 1,300 / 2,733 mm (with protective device)
Weight of basic machine	from 6.5 t



Piping turntable



Piping turntable in transport position



ADLER B 75 geo pro with suction drilling equipment



Suction pump



Mast crown with rope sling



# Drilling procedure with the drill rig B 75 geo pro



The B 75 geo pro drill rig is a real all-rounder. A diverse selection of drilling methods is possible and can be combined in one drill rig.

Depending on the drilling method, the quick-change system can be used to attach various carriage foot options, such as a piping turntable, carriage foot for suction drilling and much more.

## ► Suction drilling



## ► Dry drilling with piping turntable



## ► Flush drilling/core drilling (single/double/rope core drilling)





DEVELOPED &  
PRODUCED IN  
GERMANY



## Attachment drill mast ABL

- ▶ for excavators from 2 t to 30 t
- ▶ versatile application possibilities
- ▶ quick attachment to your excavator
- ▶ individual adaptation to your drilling requirements

**down to 15 m!**  
per drill procedure



### Attachment drill mast ABL

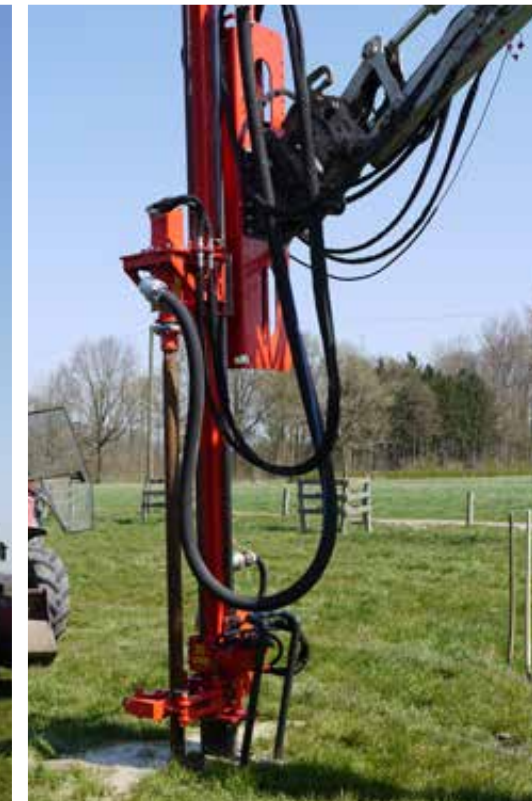
ADLER's attachment drill mast (ABL) has been specially designed for the attachment to an excavator and turns it quickly and easily into a cost-effective drill rig.

Production according to the modular principle enables us to create from a basic unit and the various add-on modules a customised drill rig. Depending on the local conditions and the drilling requirements, we can thus configure the optimal solution for our customers.

This guarantees a high degree of flexibility and a wide range of possible applications for individual production and high economic efficiency.



Attachment drill mast with 6.5 m travel  
on the 8 t excavator



Attachment drill mast in the  
drilling process on the excavator



Mounting of the drill carriage over the quick coupler  
of the excavator



Attachment drill mast with hydraulic clamp



Setting up the drill rig ABL with the excavator





## Attachment mast with flush drilling method



Flush drilling with a water circuit



ADLER geared drill head with inlet for filter pipes



Ideal for groundwater lowering



Easy transportation



With side tilt on request

## Attachment mast with dry drilling method



ADLER-ABL 12 for the probing for unexploded bombs



Optimal for large-scale projects, the ADLER-ABL 15



Travelling guide rings



Various drill heads available



Mast foot designed as a cable-crushing-lifting clamp



Cable-crushing-lifting clamp in use



# The Specialists

A wide variety of drilling rig applications emerge from the B 25, which, depending on the customers' wishes can be adapted to the various work requirements.

DEVELOPED &  
PRODUCED IN  
GERMANY



## B 25 Uni

Powerful and compact machine for flush drilling, dry drilling, dynamic probing, dynamic core probing and other geological explorations

► more on page 26



## B 25 SF

Screw-in drill rig for screw-in foundations with a torque up to 8,000 Nm

► more on page 28



## B 25 Electric

The ideal drill rig for drilling where combustion engines are not permitted

► more on page 30



## B 25 Lightning conductor

3D impact device for earth rods, diameter: 16 - 19 mm, up to 35 m depth

► more on page 32



## B 25 Pile driver

Compact, versatile pile driving machine for steel pipes and micro-piles up to 270 mm, pile driving weight 500 kg

► more on page 34





## Drill rig B 25 Uni

- ▶ powerful and compact machine
- ▶ excellent for dynamic probing, dynamic core probing and other geological explorations
- ▶ comfortable all-rounder for flush and dry drilling
- ▶ for the screw-in of screw foundations

down to 50 m!



### Characteristics of B 25

Flush drilling*	Depth: 50 m	Diameter: 150 mm
Down-the-hole hammer drilling*	Depth: 50 m	Diameter: 120 mm
Dry drilling*	Depth: 15 m	Diameter: 180 mm
Hollow stem auger procedure*	Depth: 15 m	Diameter: 180 mm
Subsoil assessment		✓
Probing for unexploded bombs		✓

\*) The values given are for orientation and may vary depending on the soil conditions.

### Technical specifications

Drive unit (Kubota engine)	3 cyl. / 18.5 kW / 25 HP diesel
Tank capacity	30 l
ADLER-Crawler Undercarriage F 17 ADLER-Crawler Undercarriage F 25 (optional)	Width: 725 mm - 1,125 mm (telescopicable) Width: 775 mm - 1,175 mm (telescopicable)
Support feet	4 x hydraulic
Drill pipes	1.5 m
Travel range	1.8 m
Feed	8 kN
Retraction force	15 kN
Mast lowering 200 mm	optional
Feed system	Hydraulic engine with roller chain
Hydraulic drill head with lateral rinsing head clearance 2	ABK 400: 120 daNm / 90 rpm
Hydraulic drill head with transmission (2-speed) clearance 2 1/2"	1st gear (slow): 220 daNm / 45 rpm 2nd gear (fast): 110 daNm / 90 rpm Other speeds and torques possible
Mud pump	max. 50 m³/h - max. 6 bar
Lift clamp passage / Lifting force / stroke	up to Ø 219 mm / 80 kN / 200 mm
Offset drilling	optional
Winch hydraulic traction / Rope length / Ø rope	5 kN / 30 m / 6 mm
Mast extension	optional
Cable remote control for travel drive	optional
Transport dimensions (L / W / H)	3,250 / 900 / 1,950 mm (with safety guard)
Weight of basic machine	from 1.6 t



Probe drilling with hollow stem auger or dynamic probing can be carried out alternately by swivelling-in the dynamic probing unit.



For the screw-in of screw foundations



Lifting unit with ball clamp for pulling the pile-driving or pile-coring tools (120 kN lifting force)



Extensive accessories for the use of the dynamic probing unit available



Extensive accessories for the use of the dynamic probing unit available





# Screw-in drill rig for screw foundations B 25 SF

- ▶ **powerful screw-in drill rig for simple and fast screw-in of screw foundations**
- ▶ **ideal for screw foundations in fence construction, for traffic and advertising technology, for photovoltaics, for gardening and landscaping, for hall and timber construction**
- ▶ **digital construction site and pile documentation**
- ▶ **self-propelled machine, flexibly applicable – even on difficult terrain**

Drill head with  
**8,000 Nm**



## Characteristics of B 25 SF

### Technical specifications

Drive unit (Kubota engine)	3 cyl. / 18.5 kW / 25 HP diesel
Tank capacity	30 l
ADLER-Crawler Undercarriage F 25	Width: 775 mm - 1,175 mm (telescopic)
Support feet	4 x hydraulic
Travel for screw foundations	3.5 m
Feed	15 kN
Retraction force	23 kN
Mast lowering	optional
Feed system	Hydraulic engine with roller chain
Hydraulic gear drill head	Transmission speed electrically adjustable via on-board computer: 800 daNm / 20 rpm Other speeds and torques possible
Offset drilling	15°
Cable remote control for driving and drilling	standard
Transport dimensions (L / W / H)	4,350 / 930 / 2,250 mm
Weight of basic machine	from 2.2 t



Variable drill head with up to 8,000 Nm and with quick change device



15° mast tilt to the right / left / front



Construction site and pile documentation with interface for data export – configurable according to customer requirements



Hydraulic clamp for guiding the screw foundations



Support shoe set for grass and indoor use with anti-slip system





DEVELOPED &  
PRODUCED IN  
GERMANY



## Drill rig B 25 Electric

- ▶ enables drilling in places where combustion engines are **not permitted**
- ▶ no fine dust emission
- ▶ for drilling in buildings and indoor
- ▶ lower noise emissions
- ▶ lower maintenance costs

down to 50 m!



### Characteristics of B 25 Electric

Flush drilling*	Depth: 50 m	Diameter: 150 mm
Down-the-hole hammer drilling*	Depth: 50 m	Diameter: 120 mm
Dry drilling*	Depth: 15 m	Diameter: 180 mm
Hollow stem auger procedure*	Depth: 15 m	Diameter: 180 mm
Subsoil assessment		✓
Probing for unexploded bombs		✓

\*) The values given are for orientation and may vary depending on the soil conditions.

### Technical specifications

Drive unit electric motor	18.5 kW - 380 V - 3,000 rpm - Dr/Y 400/690 V - IP 65
Connectors	Input: CEE plug 63 A-3 Output: 1 x CEE socket 16 A-5 2 x CEE socket 16 A-3
Travel drive battery to borehole	Hydraulic power pack 4 kW 24 V 2 batteries 12 V 100 Ah, driving time ~ 20 min Emergency drive with cable possible when battery is empty
ADLER-Crawler Undercarriage F 17 ADLER-Crawler Undercarriage F 25 (optional)	Width: 725 mm - 1,125 mm (telescopic) Width: 775 mm - 1,175 mm (telescopic)
Support feet	4 x hydraulic
Drill pipes	1.5 m
Travel range	1.8 m
Feed system	8 kN
Retraction force	15 kN
Mast lowering 200 mm	optional
Feed system	Hydraulic engine with roller chain
Hydraulic drill head with lateral rinsing head clearance 2"	ABK 400: 120 daNm / 90 rpm
Hydraulic drill head with transmission (2-speed) clearance 2 1/2"	1st gear (slow): 220 daNm / 45 rpm 2nd gear (fast): 110 daNm / 90 rpm Other speeds and torques possible
Mud pump	max. 50 m³/h - max. 6 bar
Lift clamp passage / Lifting force / stroke	up to Ø 219 mm / 80 kN / 200 mm
Offset drilling	optional
Winch hydraulic traction / Rope length / Ø rope	5 kN / 30 m / 6 mm
Mast extension	optional
Cable remote control for travel drive	optional
Transport dimensions (L / W / H)	3,250 / 900 / 1,950 mm (with safety guard)
Weight of basic machine	from to 1.6 t



2-speed hydraulic drill head with clearance 2 1/2"



Electric control cabinet with three CEE sockets (outlet)



Side swivel of the drill mast (on option)



ADLER B 25 operator's platform



Emission-friendly electric motor  
18.5 kW - 380 V - 3,000 rpm







## Drill rig B 25 Lightning conductor

- ▶ Impact device for earthing rods with a diameter of 16 - 19 mm
- ▶ Earthing up to 35 m possible depending on ground conditions
- ▶ Mast hydraulically adjustable in three directions (3D)
- ▶ hydraulically operated generator 220 V / 3 kW
- ▶ Radio remote control for the hydraulic impact hammer up / down and on / off – with endless impact device via limit switches
- ▶ Radio remote control for the travel drive forward / backward

Earthing  
down to 35 m!



### Characteristics of B 25 Lightning conductor

#### Technical specifications

Drive unit (Kubota engine)	3 cyl. / 18.5 kW / 25 HP diesel
Tank capacity	30 l
ADLER-Crawler Undercarriage F 17	Width: 725 mm - 1,125 mm (telescopicable)
Travel range	1.6 m
Feed system	Hydraulic engine with roller chain
Hydraulic impact head	1,740 lift/min. Holding sleeve up to 16 mm diameter
Oblique hammering	✓
Radio remote control for driving and hammering	✓
Transport dimensions (L / W / H)	3,250 / 900 / 1,950 mm
Weight of basic machine	from 1.4 t



3D mast swivel



Equipped with tool box and transport box for earthing rods



Including power generator with two sockets



Angular measuring unit for oblique hammering



ADLER B 25 lightning conductor in transport position



DEVELOPED &  
PRODUCED IN  
GERMANY



Drill rig

## B 25 Pile driver

- compact, versatile pile-driving tool – ideal for confined spaces
- low operating weight – high driving performance with up to 500 kg
- for steel- or micropiles up to 270 mm
- Mast tilt to the front 10°
- telescopic mast extension, 1 m (hydraulic)
- Pullmaster PL 5 with a winch capacity of up to 500 kg

Pile driving weight:  
**500 kg**



### Characteristics of B 25 Pile driver

#### Technical specifications

Drive unit (Kubota engine)	3 cyl. / 18.5 kW / 25 HP diesel
Tank capacity	30 l
ADLER-Crawler Undercarriage F 25	Width: 775 mm - 1,175 mm (telescopic)
Pile driving weight	500 kg
Winch	Pullmaster PL 5
Height with mast up	4,256 mm
Mast extension	1,000 mm
Transport dimensions (L / W / H)	3,200 / 800 / 1,900
Weight of basic machine	from 1.6 t



ADLER B 25 pile driver in use



Hydraulic mast extension 1,000 mm



ADLER B 25 – compact and versatile pile driver



Downed mast with halyard weight lock



Winch: Pullmaster PL 5





## ADLER-Drill rigs for all fields of application



## Flush drilling procedure

B-series drill rigs make flush drilling much easier. Drilling debris is quickly removed with little effort. Water containing flushing additives suited to the specific soil characteristics circulates in a loop. The additives in the water increase its load carrying capacity and support the bore hole wall. Our B-series allows you to reach great depths even when drilling without a casing.

With our products you can achieve drill depths of 100 m and diameters of up to 200 mm!

- ▶ versatile use
- ▶ efficient drilling
- ▶ low noise



QR code for  
product video!



Sampling of material from the flush drilling water



Rod replacement during flush drilling procedure



2-step flush drill head with  
swivel-out function on the B 50



# Flush drilling procedure



Flush drilling with water circuit via a container



Breaker with hydraulic clamp – standard feature on all B-series models



Installation of a geothermal probe



QR code for product video!



Drilling in livestock shed



Well drilling in a fully landscaped garden



Preventer

# Dry drilling procedure



Due to its compact design, the B50 with dry drilling equipment is also suitable for use in confined spaces



A magnetic winch supplies drilling accessories during the drilling process



Drilling debris removed by the auger



Easy drill auger control via the control panel



The auger is removed by swivelling out the drill head



# Down-the-hole-hammer procedure

This drilling procedure enables you to drive down through hard ground, such as rock, granite and other stones using air and the appropriate down-the-hole-hammer. ADLER offer you down-the-hole-hammer equipment for its B-series. You will achieve outstanding drilling performance when you combine it with a high-performance compressor.

- ▶ easy to handle
- ▶ drilling through stone
- ▶ excellent drilling performance



QR code for product video!



3" down-the-hole-hammer with drill crown



B 50 mit Imlochhammerausrüstung

# Hollow stem auger procedure

Our drill rigs are ideal for drilling with a hollow stem auger. No flushing fluid is required here either. Are you interested in obtaining high-grade ground samples? If so, the hollow stem auger procedure with our drill rigs is the right solution. In addition, our B-series enables you to set up groundwater measuring points, create pillar foundations and use different systems for sampling.

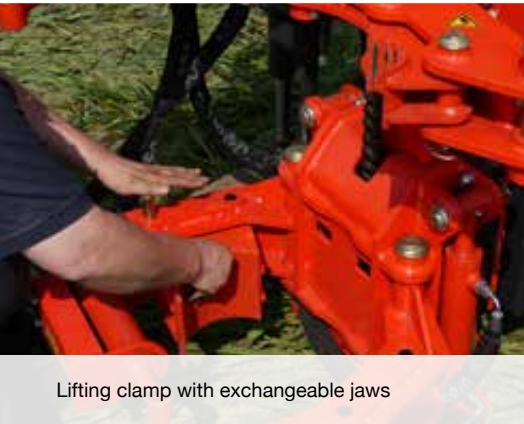
- ▶ short set-up time
- ▶ quick processing
- ▶ high torque despite low operating weight



Probing using the hollow stem auger on a pontoon on the River Rhine



Easy disassembly of the hollow stem auger due to the swivel-out drill head



Lifting clamp with exchangeable jaws



Dry drilling with external support casing



Control panel for controlling the drill head



Drilling with hollow stem auger and universal joint



Working with the hollow stem auger



Hollow stem auger guided by the lifting clamp



# Geological explorations

The success of your construction project relies on subsoil assessment based on sampling and probing. Soil exploration drilling provides you with information on rock types and soil qualities on site. Small drilling tasks down to 15 m, pressure probing and soil density assessments by means of superficial percussion probing are possible. Depending on soil characteristics and depth, you may use lightweight or heavy probes for percussion probing. Our B-series delivers a reliable assessment of your construction project in many different ways!

The B-series is your universal tool for expert soil assessments.

- ▶ different test methods
- ▶ compact
- ▶ versatile



QR code for product video!



B 25 equipped with a percussion probing unit



Geological probing with the pile-driving probing unit or the hollow stem auger possible in alternation



Safe working with the ADLER-drill rig



Water drainage during core drilling



Dynamic probing with the ADLER-drill rig B 50



B 25 drill rig in use pulling cores



Magazine for test rods



Core drilling with single core drill pipe or double core drill pipe



Core drilling at a canal sluice



# Probing for unexploded bombs

Even when probing for unexploded bombs, our drill rigs offer you the perfect solution. Dry drilling allows you to create space for soil probes at specific intervals. These can survey areas for signs of unexploded bombs. Experience shows that most unexploded bombs are at a depth of no more than 6 m and are therefore easy to reach with our B-series !

In addition to the ADLER-B 50 machines, the smaller B 25 has also proven to be highly efficient when probing for unexploded bombs.

- ▶ **low transport weight**
- ▶ **flexible and narrow**
- ▶ **good off-road mobility**





# Customised solutions

In addition to our sturdy B-series drill rigs, we also offer tailored solutions produced to customer requirements. We thus work directly with you to develop custom-fit solutions. This enables us to sensibly adapt and complement our standard products and offer completely different kinds of product solutions, such as the 3D ram drill rig.



Probing to locate cavities.



B 75 with 3D sloping device incl. two mast supports



Mast lowering 1,000 mm



3D-ram drill rig with hydraulic hammer



Gear drill head with floating spindle on B 75 pro



Cable-crushing-lifting clamp in use



System trailer for drill rigs – a place for everything



B 25 Pile driver



Drill head with side shift on the B 25



Angular measuring unit



Protective bonnet for operator's platform with illumination



Head preventer with side outlet



With the right accessories your  
ADLER-drill rig becomes even more powerful



Universal joint with BOM 73.5 above, SW 41/51 below



Tow bar



Drill starter with  
endless screw of 80 mm  
available up to 324 mm



Different drill beginners and drill  
bits available



Pipe cutting shoe for  
Outside piping  
Ø from - mm to 324 mm



Removal clamp for the  
outside piping



Installation and lifting cap for  
the outer piping



Air compressor – drive via the drill rig



High-pressure fresh water pump



Oblique drilling device with mast supports



2-stage ADLER-geared boring head



2-stage drill drive with torques up to 620 daNm or revolutions up to 210 rpm



Powerful water pump 120 m³ / h at 8 bar – extendable for maintenance



Worm pump in use at Double core barrel drilling



With the right accessories your  
ADLER-drill rig becomes even more powerful



Lifting clamps



Winch with 500 kg or 1,000 kg traction force (optional)



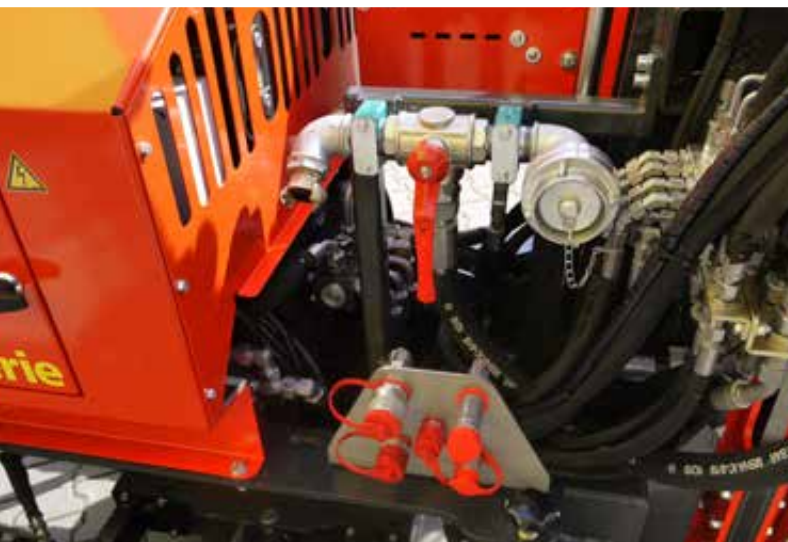
Mast bracket rigid or hydraulic for the rope deflection



Cable remote control for driving



Remote control for driving and drilling (optional)



Switching water to compressed air and additional hydraulic connections for accessories



Drill transport trailer dead weight 560 kg and gross vehicle weight 3,500 kg, incl. loading ramp



Hydraulic clamping bell (large/small) for breaking the drill pipes and the outer pipework up to 178 mm (only possible with large clamping bell)



Flush drill head, crushing device, hydraulic clamp and lifting clamp



One-level gear motor



Clamp crushing clamp



Hydraulic mast lowering 300 mm on the B 50 and B 75



**With the right accessories your**  
ADLER-drill rig becomes even more powerful



Mud pump with flushing pressure display



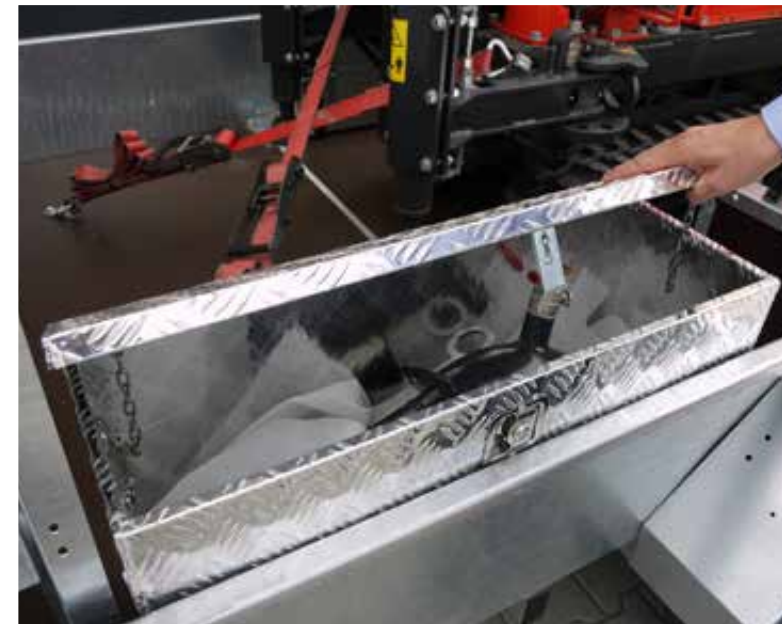
Mud pump on/off



Hydraulic mast arm with ropewalk



Down-the-hole hammer with various drill bits





# Go to different terrain now!

## Crawler Undercarriage F-series

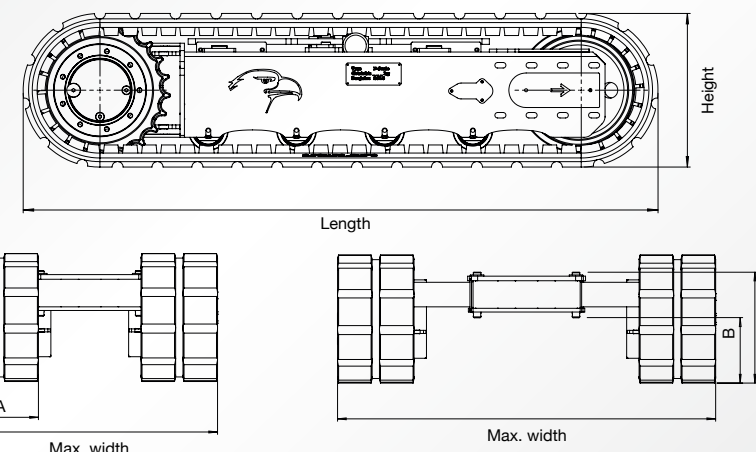
- ▶ perfectly suitable for industrial, agricultural and construction machinery
- ▶ choose between a rigid or an extendable undercarriage incl. hydraulic telescoping
- ▶ very stable design
- ▶ two speed levels
- ▶ standard equipment includes four lashing points
- ▶ on option, customer-specific adaptations possible


**KTL**  
 & powder

## Characteristics of ADLER-Crawler Undercarriage F-series

### We don't like gridlocked situations!

The stable and long-life ADLER-Crawler Undercarriages are the ideal solution and advantage where wheels can squeeze or damage the ground surface because of punctual pressure. They allow high stability and manoeuvrability in multiple application areas. No matter what – Drill Rig, lifting platform, crane or harvester – the extendable ADLER-Crawler Undercarriages make your machine a flexible off-roader.



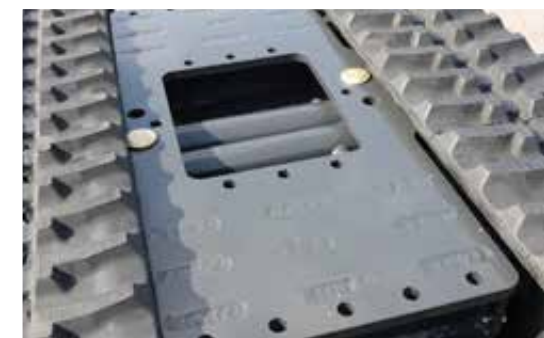
ADLER-Crawler Undercarriage F-series	F 17	F 25	F 30	F 35	F 45	F 75
Load capacity incl. undercarriage kg	1,700	2,500	3,000	3,500	4,500	7,500
Load capacity excl. undercarriage kg	1,380	2,110	2,550	2,815	3,660	5,850
Weight kg	320	390	450	685	840	1,650
Length mm	1,344	1,446	1,699	1,728	1,952	2,523
Min. width mm	725	775	780	835	1,000	1,300
Max. width mm	1,125	1,175	1,180	1,235	1,400	1,700
Height mm	336	336	336	418	452	560
Chain width A mm	180	230	250	250	300	400
Pass-over height B mm	182	182	168	232	235	243
Height in extended position C mm	286	289	285	349	358	478
Speed km/h	2.8	2.6 / 5.2	2.6 / 5.2	2.2 / 3.5	2.2 / 3.5	2.4 / 4.7
Max. oil flow per motor l/min	20	20	20	35	35	55
Max. torque value per motor Nm	1,443	1,607 / 798	1,607 / 798	4,820 / 3,015	4,820 / 3,015	10,465 / 5,420
Max. pressure bar	200	200	200	200 / 240	200 / 240	200 / 280



ADLER-Drill Rig on ADLER-Crawler Undercarriage



A stable steelwork assures long durability of the extendable ADLER-Crawler Undercarriages



The centre piece of the undercarriage has many fixing points for customer-specific use.



All undercarriages can be manufactured in a rigid version or with hydraulic telescoping.



Quality motors assure a good torque value and guarantee the excellent ADLER performance, as usual.







PRODUCING QUALITY.



[www.adler-arbeitsmaschinen.de](http://www.adler-arbeitsmaschinen.de)



**ADLER Arbeitsmaschinen GmbH & Co. KG**

An den Bahngleisen 28 · 48356 Nordwalde · Germany

Tel.: +49 (0) 25 73/97 999 - 0 · Fax: +49 (0) 25 73/97 999 - 40

[info@adler-arbeitsmaschinen.de](mailto:info@adler-arbeitsmaschinen.de)

All information in this brochure is based on the best knowledge available to us and has been carefully checked. No liability is accepted.  
2024/01 (GB) We reserve the right to modify dimensions, weight and technical data.  
Conceptual design & layout: [www.werbeagentur-willers.de](http://www.werbeagentur-willers.de)